

POLY[®]CONN

Servicing Your Pneumatic Needs For Over 40 Years

PRESSURE GAUGES

EMAIL

insidesales@polyconn.com

WEBSITE

www.polyconn.com

QUESTIONS

(763) 559-0388



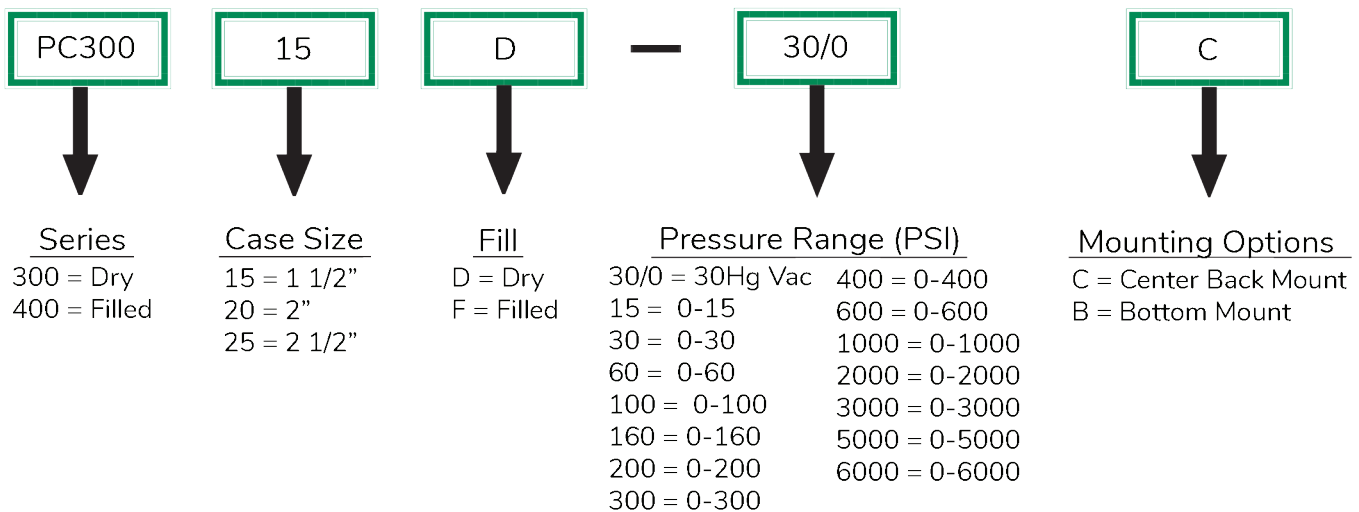
Features and Specifications for Pressure Gauges

Polyconn offers precision pressure gauges in a wide selection of pressure ranges and case sizes. Our pressure gauges can be used with air, gas, oil, or water, to measure pressure within any operating system. We carry gauges with standard case sizes from 1-1/2" to 2-1/2".

Our precision pressure gauges are available in dry or liquid-filled variations. All Polyconn's pressure gauges deliver outstanding accuracy, but our dry or liquid-filled gauges are better suited for high-vibration applications, as the liquid inside the casings help minimize pointer fluctuations. Both our dry and liquid-filled precision pressure gauges utilize Bourdon tube movement, to provide better repeatability and accuracy. These Bourdon tubes are C-shaped in copper alloy for measurements up to 600 PSI, and Helical in phosphor bronze for measurements above 600 PSI.

Our pressure gauges are available with mounting on the bottom or center-back, contact us if your application calls for a different mounting option as more are available. All precision pressure gauges include dual scale dials, with side-by-side measurements for both PSI and metric readings (KPA and Bar). Our dry pressure gauges feature a corrosion resistant black steel casing, and our liquid-filled pressure gauges feature a 304 stainless steel casing. All pressure gauges feature black enameled aluminum pointers, polycarbonate windows (temperature compensating for liquid-filled only), and a threaded brass NPT connection. Polyconn's precision pressure gauges are ASME/ANSI B40.1 Grade A (2-1-2%) certified for accuracy.

Part Number Guide



Example Shown Above: 300 Series gauge with 1 1/2" case, dry filled, vacuum pressure, with center back mount.

CONSIDERATIONS:

Liquid filling adds to the life of a pressure gauge. When the case is filled with a dampening fluid, the internal components are protected from outside contaminants, providing continuous lubrication for the tube movement, reducing shock waves caused by vibration or pressure fluctuations, and virtually eliminating pointer flutter.

WARNING:

Liquid filled gauges should **NOT** be used in applications involving oxygen, chlorine, nitric acid, hydrogen peroxide, and any other strong oxidizing agents because of danger of spontaneous chemical reaction, ignition, or explosion.

Features and Specifications for Dry Pressure Gauges



FEATURES

- Bourdon Tube: C-Shaped in copper alloy up to 600 PSI and Helical in phosphor bronze above 600PSI
- Pointer: Black Enameled Aluminum
- Dial: White Aluminum
- Window: Polycarbonate
- Case Material: Steel, corrosion resistant black
- Bezel: Stainless Steel Rolled
- Connection Size: 1/8" NPT male on 1½" size.
1/4" NPT male on 2" and 2½" sizes.
- Wetted Parts: Copper Alloy

USES

- Suitable for gas, oil, water, or any medium not corrosive to brass or bronze.

SPECIFICATIONS

PRESSURE RANGE	ACCURACY	CONNECTION MATERIAL	FILL MATERIAL
15 to 6,000 PSI	ASME/ANSI B40 1 Grade A (2-1-2%)	Brass	Dry

BOTTOM MOUNT 1½" CASE

Part #	PSI	Bar
PC30015D-15B	15	0-1
PC30015D-30B	30	0-2
PC30015D-30/0B	30 Hg	-1
PC30015D-60B	60	0-4
PC30015D-100B	100	0-7
PC30015D-160B	160	0-11
PC30015D-200B	200	0-14

BOTTOM MOUNT 2" CASE

Part #	PSI	Bar
PC30020D-15B	15	0-1
PC30020D-30B	30	0-2
PC30020D-30/0B	30 Hg	-1
PC30020D-60B	60	0-4
PC30020D-100B	100	0-7
PC30020D-160B	160	0-11
PC30020D-200B	200	0-14

BOTTOM MOUNT 2½" CASE

Part #	PSI	Bar
PC30025D-15B	15	0-1
PC30025D-30B	30	0-2
PC30025D-30/0B	30 Hg	-1
PC30025D-100B	100	0-7
PC30025D-1000B	1000	0-70

CENTER BACK MOUNT 1½" CASE

Part #	PSI	Bar
PC30015D-15C	15	0-1
PC30015D-30C	30	0-2
PC30015D-30/0C	30 Hg	-1
PC30015D-60C	60	0-4
PC30015D-100C	100	0-7
PC30015D-160C	160	0-11
PC30015D-200C	200	0-14
PC30015D-600C	600	0-40
PC30015D-5000C	5000	0-315

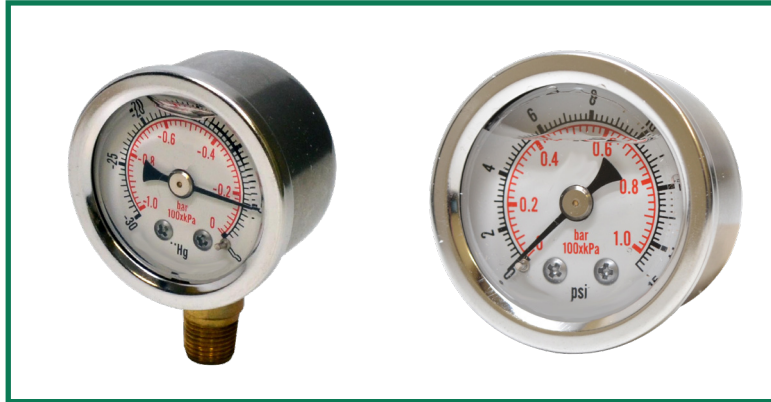
CENTER BACK MOUNT 2" CASE

Part #	PSI	Bar
PC30020D-30C	30	0-2
PC30020D-30/0C	30 Hg	-1
PC30020D-60C	60	0-4
PC30020D-100C	100	0-7
PC30020D-160C	160	0-11

CENTER BACK MOUNT 2½" CASE

Part #	PSI	Bar
PC30025D-30/0C	30 Hg	-1
PC30025D-160C	160	0-11

Features and Specifications for Glycerin Filled Pressure Gauges



FEATURES

- Bourdon Tube: C-Shaped in copper alloy up to 600 PSI and Helical in phosphor bronze above 600PSI
- Pointer: Black Enameled Aluminum
- Dial: White Aluminum
- Window: Polycarbonate - temperature compensating
- Case Material: 304 Stainless Steel
- Connection Size: 1/8" NPT male on 1½" size.
1/4" NPT male on 2" and 2½" sizes.
- Wetted Parts: Copper Alloy

USES

- Suitable for any medium not corrosive to brass or bronze.
- Recommended for reducing shock caused by pressure fluctuations or vibrations.

SPECIFICATIONS

PRESSURE RANGE	ACCURACY	CONNECTION MATERIAL	FILL MATERIAL
15 to 10,000 PSI	ASME/ANSI B40 1 Grade A (2-1-2%)	Brass	Glycerin

BOTTOM MOUNT 1½" CASE

Part #	PSI	Bar
PC40015F-15B	15	0-1
PC40015F-30B	30	0-2
PC40015F-30/0B	30 Hg	-1
PC40015F-60B	60	0-4
PC40015F-100B	100	0-7
PC40015F-300B	300	0-20
PC40015F-1000B	1000	0-70
PC40015F-2000B	2000	0-140

BOTTOM MOUNT 2" CASE

Part #	PSI	Bar
PC40020F-30B	30	0-2
PC40020F-30/0B	30 Hg	-1
PC40020F-160B	160	0-11
PC40020F-2000B	2000	0-140
PC40020F-5000B	5000	0-315

BOTTOM MOUNT 2½" CASE

Part #	PSI	Bar
PC40025F-15B	15	0-1
PC40025F-30B	30	0-2
PC40025F-30/0B	30 Hg	-1
PC40025F-60B	60	0-4
PC40025F-100B	100	0-7
PC40025F-160B	160	0-11
PC40025F-200B	200	0-14
PC40025F-600B	600	0-40
PC40025F-1000B	1000	0-70
PC40025F-1500B	1500	0-100
PC40025F-2000B	2000	0-140
PC40025F-3000B	3000	0-200
PC40025F-5000B	5000	0-315

CENTER BACK MOUNT 1½" CASE

Part #	PSI	Bar
PC40015F-15C	15	0-1
PC40015F-30C	30	0-2
PC40015F-60C	60	0-4
PC40015F-100C	100	0-7
PC40015F-160C	160	0-11
PC40015F-2000C	2000	0-140

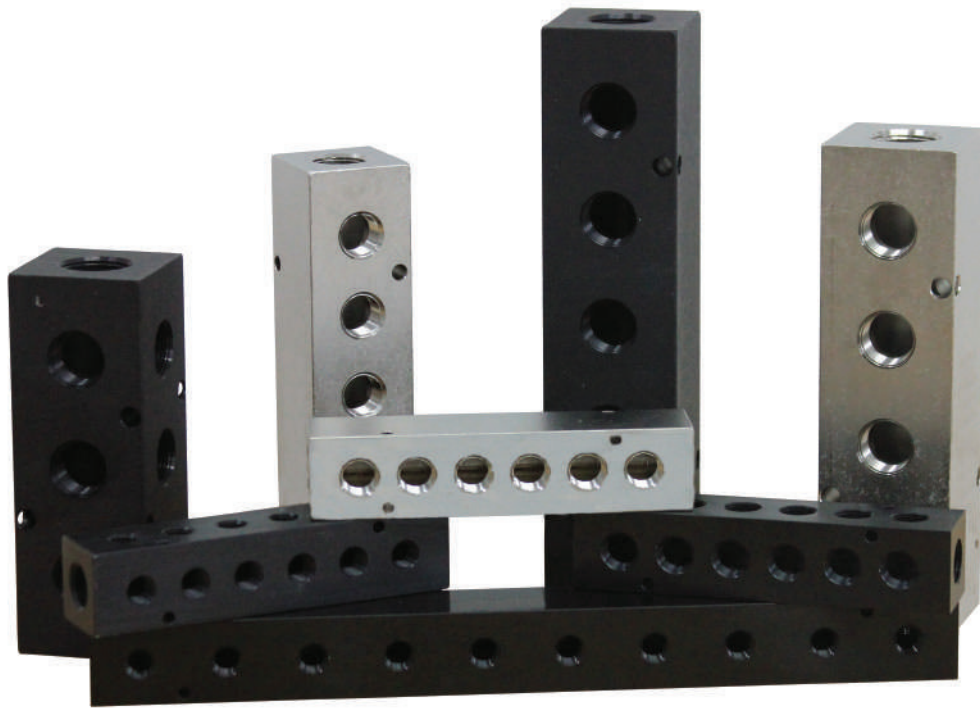
CENTER BACK MOUNT 2" CASE

Part #	PSI	Bar
PC40020F-15C	15	0-1
PC40020F-30/0C	30 Hg	-1
PC40020F-100C	100	0-7
PC40020F-160C	160	0-11
PC40020F-200C	200	0-14

CENTER BACK MOUNT 2½" CASE

Part #	PSI	Bar
PC40025F-15C	15	0-1
PC40025F-30C	30	0-2
PC40025F-30/0C	30 Hg	-1
PC40025F-60C	60	0-4
PC40025F-100C	100	0-7
PC40025F-160C	160	0-11
PC40025F-200C	200	0-14
PC40025F-300C	300	0-20
PC40025F-600C	600	0-40
PC40025F-1000C	1000	0-70
PC40025F-1500C	1500	0-100
PC40025F-2000C	2000	0-140
PC40025F-3000C	3000	0-200
PC40025F-5000C	5000	0-315

Now that you have your gauges,
don't forget your manifolds!



POLY[®] CONN

Servicing Your Pneumatic Needs For Over *40 Years*

Polyconn[®] the one-stop shop for your
pneumatic needs.