



Master *W*AIRhouse®  
Fluid Power Products



# Brass and Nickel Plated Pipe Fittings



Version 2020  
Revised 01/2020

Email your order to: [sales@polyconn.com](mailto:sales@polyconn.com) or fax to (763) 398-2590 · [www.polyconn.com](http://www.polyconn.com) · Questions call: (763)559-0388  
3062 Ranchview Lane North · Plymouth, MN 55447

# Features and Specifications for Brass Pipe Fittings

## SPECIFICATIONS

Product	Operating Pressure (PSI)	Temp. Range	Vibration	Assembly Instructions
Brass Pipe Fitting	Up to 1,000	-68°F to +250°F	Fair resistance to vibration and pipe movement depending on conditions	Tighten approx. 2-½ turns past hand tight

## FEATURES

- \* All pipe fitting threads meet the standards developed by the SAE (Society of Automotive Engineers).
- \* Connectors, unions, nuts and extruded elbows and tees machined from CA 360 and CA 345 brass rod.
- \* Forged elbows and tees machined from CA 377 brass.

## USES

- \* For the use with brass, copper or iron pipe.
- \* Designed for low and medium pressure pipe line connections.
- \* Commonly used in water, grease, fuels, LP and natural gas, refrigeration, instrumentation and low pressure systems.
- \* Brass pipe fittings meet SAE, ASME and ASA requirements.

## BULKHEAD



Part #	NPT F	Washer ID	List Price	QTY	Pkg. Price
PC68BH-2	1/8"	16.45 mm	\$ 3.13	5	\$ 15.66
PC68BH-4	1/4"	19.8 mm	\$ 4.12	5	\$ 20.60
PC68BH-6	3/8"	26 mm	\$ 4.78	5	\$ 23.90
PC68BH-8	1/2"	29.1 mm	\$ 6.21	5	\$ 31.06
PC68BH-12	3/4"	33.2 mm	\$ 8.39	5	\$ 41.93
PC68BHS-2	1/8"	16.45 mm	\$ 2.73	5	\$ 13.65
PC68BHS-4	1/4"	19.8 mm	\$ 3.06	5	\$ 15.30



Part #	NPT F	Washer ID	List Price	QTY	Pkg. Price
PC68NBH-2	1/8"	16.45 mm	\$ 4.83	5	\$ 24.15
PC68NBH-4	1/4"	19.8 mm	\$ 6.02	5	\$ 30.08
PC68NBH-6	3/8"	26 mm	\$ 6.80	5	\$ 33.99
PC68NBH-8	1/2"	29.1 mm	\$ 8.52	5	\$ 42.59
PC68NBH-12	3/4"	33.2 mm	\$ 9.39	5	\$ 46.93
PC68NBHS-2	1/8"	16.45 mm	\$ 4.35	5	\$ 21.73
PC68NBHS-4	1/4"	19.8 mm	\$ 4.75	5	\$ 23.74

## FEMALE 90° ELBOW



Part #	NPT F	List Price	QTY	Pkg. Price
PC100B-2	1/8"	\$ 1.47	5	\$ 7.37
PC100B-4	1/4"	\$ 2.15	5	\$ 10.77
PC100B-6	3/8"	\$ 2.82	5	\$ 14.11
PC100B-8	1/2"	\$ 8.40	5	\$ 41.98
PC100B-12	3/4"	\$ 19.19	5	\$ 95.97



Part #	NPT F	List Price	QTY	Pkg. Price
PC100NB-2	1/8"	\$ 2.21	5	\$ 11.07
PC100NB-4	1/4"	\$ 3.05	5	\$ 15.24
PC100NB-6	3/8"	\$ 3.89	5	\$ 19.47
PC100NB-8	1/2"	\$ 10.44	5	\$ 52.22
PC100NB-12	3/4"	\$ 23.28	5	\$ 116.39

## FEMALE TEE



Part #	NPT F	List Price	QTY	Pkg. Price
PC101B-2	1/8"	\$ 1.75	5	\$ 8.76
PC101B-4	1/4"	\$ 3.01	5	\$ 15.04
PC101B-6	3/8"	\$ 3.87	5	\$ 19.37
PC101B-8	1/2"	\$ 9.14	5	\$ 45.69
PC101B-12	3/4"	\$ 16.94	5	\$ 84.72

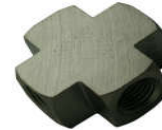


Part #	NPT F	List Price	QTY	Pkg. Price
PC101NB-2	1/8"	\$ 2.55	5	\$ 12.77
PC101NB-4	1/4"	\$ 4.12	5	\$ 20.60
PC101NB-6	3/8"	\$ 5.18	5	\$ 25.90
PC101NB-8	1/2"	\$ 11.34	5	\$ 56.70
PC101NB-12	3/4"	\$ 15.87	5	\$ 79.35

## CROSS



Part #	NPT F	List Price	QTY	Pkg. Price
PC102B-2	1/8"	\$ 6.58	5	\$ 32.91
PC102B-4	1/4"	\$ 6.09	5	\$ 30.44
PC102B-6	3/8"	\$ 15.54	5	\$ 77.72
PC102B-8	1/2"	\$ 20.33	5	\$ 101.67
PC102B-12	3/4"	\$ 22.56	5	\$ 112.81



Part #	NPT F	List Price	QTY	Pkg. Price
PC102NB-2	1/8"	\$ 6.75	5	\$ 33.75
PC102NB-4	1/4"	\$ 7.67	5	\$ 38.37
PC102NB-6	3/8"	\$ 19.02	5	\$ 95.12
PC102NB-8	1/2"	\$ 24.77	5	\$ 123.86

## FEMALE COUPLING



Part #	NPT F	List Price	QTY	Pkg. Price
PC103B-2	1/8"	\$ 0.77	5	\$ 3.86
PC103B-4	1/4"	\$ 1.38	5	\$ 6.90
PC103B-6	3/8"	\$ 1.73	5	\$ 8.65
PC103B-8	1/2"	\$ 2.82	5	\$ 14.11
PC103B-12	3/4"	\$ 7.89	5	\$ 39.45



Part #	NPT F	List Price	QTY	Pkg. Price
PC103NB-2	1/8"	\$ 1.33	5	\$ 6.64
PC103NB-4	1/4"	\$ 1.73	5	\$ 8.67
PC103NB-6	3/8"	\$ 2.53	5	\$ 12.67
PC103NB-8	1/2"	\$ 3.14	5	\$ 15.72

## UNION



Part #	NPT F	List Price	QTY	Pkg. Price
PC104B-2	1/8"	\$ 10.21	5	\$ 51.03
PC104B-4	1/4"	\$ 18.76	5	\$ 93.79
PC104B-6	3/8"	\$ 19.49	5	\$ 97.43
PC104B-8	1/2"	\$ 26.73	5	\$ 133.65
PC104B-12	3/4"	\$ 30.48	5	\$ 152.40



Part #	NPT F	List Price	QTY	Pkg. Price
PC104NB-2	1/8"	\$ 10.74	5	\$ 53.68
PC104NB-4	1/4"	\$ 30.07	5	\$ 150.33
PC104NB-6	3/8"	\$ 20.51	5	\$ 102.55
PC104NB-8	1/2"	\$ 28.14	5	\$ 140.68
PC104NB-12	3/4"	\$ 32.08	5	\$ 160.42

## CAP



Part #	NPT F	List Price	QTY	Pkg. Price
PC108B-2	1/8"	\$ 1.97	5	\$ 9.87
PC108B-4	1/4"	\$ 1.70	5	\$ 8.50
PC108B-6	3/8"	\$ 5.10	5	\$ 25.50
PC108B-8	1/2"	\$ 5.41	5	\$ 27.04



Part #	NPT F	List Price	QTY	Pkg. Price
PC108NB-2	1/8"	\$ 2.50	5	\$ 12.48
PC108NB-4	1/4"	\$ 2.41	5	\$ 12.05
PC108NB-6	3/8"	\$ 6.49	5	\$ 32.45
PC108NB-8	1/2"	\$ 6.86	5	\$ 34.30

## SQUARE HEAD PLUG



Part #	NPT M	List Price	QTY	Pkg. Price
PC109B-2	1/8"	\$ 4.19	5	\$ 20.97
PC109B-4	1/4"	\$ 1.67	5	\$ 8.33
PC109B-6	3/8"	\$ 3.11	5	\$ 15.56
PC109B-8	1/2"	\$ 4.80	5	\$ 24.00



Part #	NPT M	List Price	QTY	Pkg. Price
PC109NB-2	1/8"	\$ 4.51	5	\$ 22.55
PC109NB-4	1/4"	\$ 2.21	5	\$ 11.06
PC109NB-6	3/8"	\$ 3.37	5	\$ 16.84
PC109NB-8	1/2"	\$ 4.93	5	\$ 24.67

## HEX BUSHING



Part #	NPT M	NPT F	List Price	QTY	Pkg. Price
PC110B-42	1/4"	1/8"	\$ 0.59	5	\$ 2.94
PC110B-62	3/8"	1/8"	\$ 1.69	5	\$ 8.44
PC110B-64	3/8"	1/4"	\$ 0.86	5	\$ 4.28
PC110B-82	1/2"	1/8"	\$ 2.82	5	\$ 14.10
PC110B-84	1/2"	1/4"	\$ 1.71	5	\$ 8.55
PC110B-86	1/2"	3/8"	\$ 1.34	5	\$ 6.70
PC110B-124	3/4"	1/4"	\$ 3.67	5	\$ 18.37
PC110B-126	3/4"	3/8"	\$ 3.15	5	\$ 15.75
PC110B-128	3/4"	1/2"	\$ 2.75	5	\$ 13.73
PC110B-168	1"	1/2"	\$ 6.79	5	\$ 33.96
PC110B-1612	1"	3/4"	\$ 6.12	5	\$ 30.62



Part #	NPT M	NPT F	List Price	QTY	Pkg. Price
PC110NB-42	1/4"	1/8"	\$ 1.10	5	\$ 5.51
PC110NB-62	3/8"	1/8"	\$ 1.56	5	\$ 7.78
PC110NB-64	3/8"	1/4"	\$ 1.44	5	\$ 7.21
PC110NB-82	1/2"	1/8"	\$ 3.64	5	\$ 18.18
PC110NB-84	1/2"	1/4"	\$ 2.49	5	\$ 12.46
PC110NB-86	1/2"	3/8"	\$ 2.04	5	\$ 10.20
PC110NB-126	3/4"	3/8"	\$ 3.35	5	\$ 16.73
PC110NB-128	3/4"	1/2"	\$ 3.35	5	\$ 16.73
PC110NB-168	1"	1/2"	\$ 7.15	5	\$ 35.73
PC110NB-1612	1"	3/4"	\$ 6.58	5	\$ 32.90

## FACE BUSHING



Part #	NPT M	NPT F	List Price	QTY	Pkg. Price
PC110FB-42	1/4"	1/8"	\$ 2.01	5	\$ 10.04
PC110FB-64	3/8"	1/4"	\$ 1.46	5	\$ 7.28
PC110FB-84	1/2"	1/4"	\$ 1.41	5	\$ 7.05
PC110FB-86	1/2"	3/8"	\$ 1.25	5	\$ 6.25
PC110FB-128	3/4"	1/2"	\$ 2.97	5	\$ 14.86



Part #	NPT M	NPT F	List Price	QTY	Pkg. Price
PC110NFB-42	1/4"	1/8"	\$ 1.93	5	\$ 9.63
PC110NFB-64	3/8"	1/4"	\$ 1.66	5	\$ 8.29
PC110NFB-84	1/2"	1/4"	\$ 1.41	5	\$ 7.03
PC110NFB-86	1/2"	3/8"	\$ 1.48	5	\$ 7.42
PC110NFB-128	3/4"	1/2"	\$ 4.23	5	\$ 21.16

## LOCKING NUT



Part #	NPT F	List Price	QTY	Pkg. Price
PC111B-2	1/8"	\$ 2.44	5	\$ 12.21
PC111B-4	1/4"	\$ 1.27	5	\$ 6.34
PC111B-6	3/8"	\$ 3.37	5	\$ 16.84
PC111B-8	1/2"	\$ 2.57	5	\$ 12.83



Part #	NPT F	List Price	QTY	Pkg. Price
PC111NB-2	1/8"	\$ 3.08	5	\$ 15.40
PC111NB-4	1/4"	\$ 1.90	5	\$ 9.48
PC111NB-6	3/8"	\$ 4.41	5	\$ 22.04
PC111NB-8	1/2"	\$ 3.45	5	\$ 17.25

## CLOSE NIPPLE



Part #	NPT M	List Price	QTY	Pkg. Price
PC112B-2	1/8"	\$ 0.33	5	\$ 1.63
PC112B-4	1/4"	\$ 0.49	5	\$ 2.47
PC112B-6	3/8"	\$ 0.68	5	\$ 3.40
PC112B-8	1/2"	\$ 2.02	5	\$ 10.10
PC112B-12	3/4"	\$ 4.77	5	\$ 23.83
PC112B-14	1"	\$ 9.45	5	\$ 47.26



Part #	NPT M	List Price	QTY	Pkg. Price
PC112NB-2	1/8"	\$ 0.74	5	\$ 3.71
PC112NB-4	1/4"	\$ 0.95	5	\$ 4.74
PC112NB-6	3/8"	\$ 1.22	5	\$ 6.08
PC112NB-8	1/2"	\$ 2.89	5	\$ 14.47

## LONG NIPPLE



Part #	NPT M	Length	List Price	QTY	Pkg. Price
PC113B-215	1/8"	1.5"	\$ 0.83	5	\$ 4.13
PC113B-220	1/8"	2.0"	\$ 1.17	5	\$ 5.85
PC113B-225	1/8"	2.5"	\$ 1.42	5	\$ 7.11
PC113B-230	1/8"	3.0"	\$ 1.79	5	\$ 8.96
PC113B-240	1/8"	4.0"	\$ 4.78	5	\$ 23.91
PC113B-250	1/8"	5.0"	\$ 6.05	5	\$ 30.24
PC113B-260	1/8"	6.0"	\$ 6.86	5	\$ 34.28
PC113B-415	1/4"	1.5"	\$ 0.94	5	\$ 4.69
PC113B-420	1/4"	2.0"	\$ 1.14	5	\$ 5.72
PC113B-425	1/4"	2.5"	\$ 1.28	5	\$ 6.42
PC113B-430	1/4"	3.0"	\$ 2.22	5	\$ 11.12
PC113B-435	1/4"	3.5"	\$ 5.69	5	\$ 28.43
PC113B-440	1/4"	4.0"	\$ 6.27	5	\$ 31.37
PC113B-445	1/4"	4.5"	\$ 6.95	5	\$ 34.77
PC113B-615	3/8"	1.5"	\$ 1.21	5	\$ 6.03
PC113B-620	3/8"	2.0"	\$ 2.32	5	\$ 11.59
PC113B-625	3/8"	2.5"	\$ 2.78	5	\$ 13.91
PC113B-630	3/8"	3.0"	\$ 4.08	5	\$ 20.40
PC113B-635	3/8"	3.5"	\$ 6.67	5	\$ 33.33
PC113B-640	3/8"	4.0"	\$ 7.73	5	\$ 38.63
PC113B-670	3/8"	7.0"	\$ 10.26	5	\$ 51.29
PC113B-815	1/2"	1.5"	\$ 2.69	5	\$ 13.44
PC113B-820	1/2"	2.0"	\$ 3.34	5	\$ 16.69
PC113B-825	1/2"	2.5"	\$ 4.36	5	\$ 21.79
PC113B-830	1/2"	3.0"	\$ 5.53	5	\$ 27.66
PC113B-835	1/2"	3.5"	\$ 8.23	5	\$ 41.17
PC113B-840	1/2"	4.0"	\$ 9.74	5	\$ 48.72
PC113B-1220	3/4"	2.0"	\$ 6.73	5	\$ 33.68
PC113B-1260	3/4"	6.0"	\$ 18.27	5	\$ 91.36

## LONG NIPPLE



Part #	NPT M	Length	List Price	QTY	Pkg. Price
PC113NB-215	1/8"	1.5"	\$ 1.27	5	\$ 6.33
PC113NB-220	1/8"	2.0"	\$ 1.50	5	\$ 7.49
PC113NB-225	1/8"	2.5"	\$ 2.08	5	\$ 10.40
PC113NB-230	1/8"	3.0"	\$ 2.52	5	\$ 12.62
PC113NB-240	1/8"	4.0"	\$ 5.14	5	\$ 25.68
PC113NB-250	1/8"	5.0"	\$ 7.62	5	\$ 38.11
PC113NB-260	1/8"	6.0"	\$ 7.62	5	\$ 38.11
PC113NB-415	1/4"	1.5"	\$ 1.48	5	\$ 7.42
PC113NB-420	1/4"	2.0"	\$ 1.73	5	\$ 8.65
PC113NB-425	1/4"	2.5"	\$ 1.67	5	\$ 8.34
PC113NB-430	1/4"	3.0"	\$ 2.49	5	\$ 12.46
PC113NB-435	1/4"	3.5"	\$ 5.49	5	\$ 27.46
PC113NB-440	1/4"	4.0"	\$ 7.90	5	\$ 39.50
PC113NB-445	1/4"	4.5"	\$ 8.71	5	\$ 43.57
PC113NB-615	3/8"	1.5"	\$ 1.80	5	\$ 9.01
PC113NB-620	3/8"	2.0"	\$ 3.15	5	\$ 15.76
PC113NB-625	3/8"	2.5"	\$ 3.71	5	\$ 18.54
PC113NB-630	3/8"	3.0"	\$ 5.26	5	\$ 26.32
PC113NB-640	3/8"	4.0"	\$ 9.64	5	\$ 48.20
PC113NB-650	3/8"	5.0"	\$ 10.98	5	\$ 54.90
PC113NB-815	1/2"	1.5"	\$ 3.59	5	\$ 17.97
PC113NB-820	1/2"	2.0"	\$ 4.38	5	\$ 21.89
PC113NB-825	1/2"	2.5"	\$ 5.60	5	\$ 28.02
PC113NB-830	1/2"	3.0"	\$ 7.00	5	\$ 35.02
PC113NB-840	1/2"	4.0"	\$ 9.22	5	\$ 46.11
PC113NB-1220	3/4"	2.0"	\$ 6.71	5	\$ 33.55

## ELBOW STREET REDUCER



Part #	NPT M	NPT F	List Price	QTY	Pkg. Price
PC115B-42	1/4"	1/8"	\$ 3.91	5	\$ 19.55
PC115B-46	1/4"	3/8"	\$ 5.54	5	\$ 27.71
PC115B-64	3/8"	1/4"	\$ 5.56	5	\$ 27.78
PC115B-68	3/8"	1/2"	\$ 12.89	5	\$ 64.44



Part #	NPT M	NPT F	List Price	QTY	Pkg. Price
PC115NB-42	1/4"	1/8"	\$ 3.90	5	\$ 19.50
PC115NB-46	1/4"	3/8"	\$ 5.53	5	\$ 27.63
PC115NB-64	3/8"	1/4"	\$ 5.92	5	\$ 29.58
PC115NB-68	3/8"	1/2"	\$ 8.08	5	\$ 40.42

## ELBOW STREET 90°



Part #	NPT M & F	List Price	QTY	Pkg. Price
PC116B-2	1/8"	\$ 1.38	5	\$ 6.90
PC116B-4	1/4"	\$ 1.96	5	\$ 9.79
PC116B-6	3/8"	\$ 2.92	5	\$ 14.58
PC116B-8	1/2"	\$ 5.23	5	\$ 26.17
PC116B-12	3/4"	\$ 13.66	5	\$ 68.32



Part #	NPT M & F	List Price	QTY	Pkg. Price
PC116NB-2	1/8"	\$ 2.02	5	\$ 10.09
PC116NB-4	1/4"	\$ 2.71	5	\$ 13.54
PC116NB-6	3/8"	\$ 3.86	5	\$ 19.31
PC116NB-8	1/2"	\$ 6.63	5	\$ 33.17

## SLOTTED PLUG



Part #	NPT M & F	List Price	QTY	Pkg. Price
PC117B-2	1/8"	\$ 0.49	5	\$ 2.45
PC117B-4	1/4"	\$ 3.33	5	\$ 16.67
PC117B-6	3/8"	\$ 2.68	5	\$ 13.38



Part #	NPT M & F	List Price	QTY	Pkg. Price
PC117NB-2	1/8"	\$ 4.65	5	\$ 23.25
PC117NB-4	1/4"	\$ 1.05	5	\$ 5.25
PC117NB-6	3/8"	\$ 2.73	5	\$ 13.65

## COUPLING REDUCER



Part #	NPT F	NPT F	List Price	QTY	Pkg. Price
PC119B-42	1/4"	1/8"	\$ 3.49	5	\$ 17.45
PC119B-62	3/8"	1/8"	\$ 2.83	5	\$ 14.13
PC119B-64	3/8"	1/4"	\$ 2.83	5	\$ 14.13
PC119B-86	1/2"	3/8"	\$ 3.08	5	\$ 15.40



Part #	NPT F	NPT F	List Price	QTY	Pkg. Price
PC119NB-42	1/4"	1/8"	\$ 1.61	5	\$ 8.03
PC119NB-62	3/8"	1/8"	\$ 2.42	5	\$ 12.10
PC119NB-64	3/8"	1/4"	\$ 2.18	5	\$ 10.92
PC119NB-86	1/2"	3/8"	\$ 3.35	5	\$ 16.74

## ADAPTOR



Part #	NPT F	NPT M	List Price	QTY	Pkg. Price
PC120B-22	1/8"	1/8"	\$ 0.69	5	\$ 3.45
PC120B-42	1/4"	1/8"	\$ 1.17	5	\$ 5.87
PC120B-44	1/4"	1/4"	\$ 2.01	5	\$ 10.04
PC120B-62	3/8"	1/8"	\$ 1.47	5	\$ 7.35
PC120B-64	3/8"	1/4"	\$ 1.86	5	\$ 9.32
PC120B-66	3/8"	3/8"	\$ 2.39	5	\$ 11.95
PC120B-84	1/2"	1/4"	\$ 2.43	5	\$ 12.16
PC120B-86	1/2"	3/8"	\$ 3.89	5	\$ 19.47
PC120B-88	1/2"	1/2"	\$ 3.03	5	\$ 15.14
PC120B-128	3/4"	1/2"	\$ 6.29	5	\$ 31.47



Part #	NPT F	NPT M	List Price	QTY	Pkg. Price
PC120NB-22	1/8"	1/8"	\$ 1.18	5	\$ 5.92
PC120NB-42	1/4"	1/8"	\$ 1.77	5	\$ 8.86
PC120NB-44	1/4"	1/4"	\$ 2.68	5	\$ 13.39
PC120NB-62	3/8"	1/8"	\$ 1.83	5	\$ 9.15
PC120NB-64	3/8"	1/4"	\$ 2.59	5	\$ 12.93
PC120NB-66	3/8"	3/8"	\$ 3.23	5	\$ 16.17
PC120NB-84	1/2"	1/4"	\$ 3.28	5	\$ 16.38
PC120NB-86	1/2"	3/8"	\$ 5.05	5	\$ 25.24
PC120NB-88	1/2"	1/2"	\$ 3.99	5	\$ 19.93
PC120NB-128	3/4"	1/2"	\$ 6.87	5	\$ 34.33

## HEX HEAD PLUG



Part #	NPT M	List Price	QTY	Pkg. Price
PC121B-2	1/8"	\$ 0.49	5	\$ 2.47
PC121B-4	1/4"	\$ 0.83	5	\$ 4.17
PC121B-6	3/8"	\$ 1.34	5	\$ 6.70
PC121B-8	1/2"	\$ 2.01	5	\$ 10.04

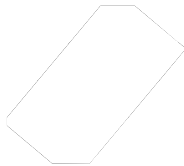


Part #	NPT M	List Price	QTY	Pkg. Price
PC121NB-2	1/8"	\$ 0.93	5	\$ 4.64
PC121NB-4	1/4"	\$ 1.32	5	\$ 6.59
PC121NB-6	3/8"	\$ 1.91	5	\$ 9.53
PC121NB-8	1/2"	\$ 2.68	5	\$ 13.39

## HEX NIPPLE



Part #	NPT M	List Price	QTY	Pkg. Price
PC122B-2	1/8"	\$ 0.49	5	\$ 2.47
PC122B-4	1/4"	\$ 1.00	5	\$ 5.00
PC122B-6	3/8"	\$ 1.15	5	\$ 5.77
PC122B-8	1/2"	\$ 2.25	5	\$ 11.23
PC122B-12	3/4"	\$ 10.32	5	\$ 51.60



Part #	NPT M	List Price	QTY	Pkg. Price
PC122NB-2	1/8"	\$ 0.95	5	\$ 4.74
PC122NB-4	1/4"	\$ 1.56	5	\$ 7.78
PC122NB-6	3/8"	\$ 1.73	5	\$ 8.65
PC122NB-8	1/2"	\$ 3.05	5	\$ 15.24
PC122NB-12	3/4"	\$ 10.86	5	\$ 54.32

## NIPPLE REDUCER



Part #	NPT M	NPT M	List Price	QTY	Pkg. Price
PC123B-42	1/4"	1/8"	\$ 0.84	5	\$ 4.22
PC123B-62	3/8"	1/8"	\$ 1.95	5	\$ 9.74
PC123B-64	3/8"	1/4"	\$ 1.08	5	\$ 5.41
PC123B-84	1/2"	1/4"	\$ 3.28	5	\$ 16.38
PC123B-86	1/2"	3/8"	\$ 1.95	5	\$ 9.74
PC123B-128	3/4"	1/2"	\$ 15.79	5	\$ 78.93



Part #	NPT M	NPT M	List Price	QTY	Pkg. Price
PC123NB-42	1/4"	1/8"	\$ 1.37	5	\$ 6.85
PC123NB-62	3/8"	1/8"	\$ 2.71	5	\$ 13.54
PC123NB-64	3/8"	1/4"	\$ 1.66	5	\$ 8.29
PC123NB-84	1/2"	1/4"	\$ 4.31	5	\$ 21.53
PC123NB-86	1/2"	3/8"	\$ 2.71	5	\$ 13.54
PC123NB-128	3/4"	1/2"	\$ 10.13	5	\$ 50.64

## ELBOW STREET 45°



Part #	NPT M	NPT F	List Price	QTY	Pkg. Price
PC124B-2	1/8"	1/8"	\$ 1.11	5	\$ 5.56
PC124B-4	1/4"	1/4"	\$ 1.69	5	\$ 8.45
PC124B-6	3/8"	3/8"	\$ 3.68	5	\$ 18.39
PC124B-8	1/2"	1/2"	\$ 6.72	5	\$ 33.60



Part #	NPT M	NPT F	List Price	QTY	Pkg. Price
PC124NB-2	1/8"	1/8"	\$ 1.70	5	\$ 8.50
PC124NB-4	1/4"	1/4"	\$ 2.38	5	\$ 11.90
PC124NB-6	3/8"	3/8"	\$ 4.78	5	\$ 23.90
PC124NB-8	1/2"	1/2"	\$ 7.07	5	\$ 35.37



## MALE ELBOW



Part #	NPT M	NPT M	List Price	QTY	Pkg. Price
PC125B-2	1/8"	1/8"	\$ 3.67	5	\$ 18.33
PC125B-4	1/4"	1/4"	\$ 4.52	5	\$ 22.58
PC125B-6	3/8"	3/8"	\$ 5.99	5	\$ 29.93
PC125B-8	1/2"	1/2"	\$ 7.73	5	\$ 38.63
PC125B-42	1/4"	1/8"	\$ 5.14	5	\$ 25.70



Part #	NPT M	NPT M	List Price	QTY	Pkg. Price
PC125NB-2	1/8"	1/8"	\$ 3.54	5	\$ 17.72
PC125NB-4	1/4"	1/4"	\$ 4.89	5	\$ 24.44
PC125NB-6	3/8"	3/8"	\$ 6.35	5	\$ 31.74
PC125NB-8	1/2"	1/2"	\$ 8.13	5	\$ 40.66

## RUN TEE



Part #	NPT M	NPT F	List Price	QTY	Pkg. Price
PC127B-2	1/8"	1/8"	\$ 1.68	5	\$ 8.40
PC127B-4	1/4"	1/4"	\$ 2.80	5	\$ 14.01
PC127B-6	3/8"	3/8"	\$ 3.29	5	\$ 16.43
PC127B-8	1/2"	1/2"	\$ 9.24	5	\$ 46.20



Part #	NPT M	NPT F	List Price	QTY	Pkg. Price
PC127NB-2	1/8"	1/8"	\$ 2.38	5	\$ 11.90
PC127NB-4	1/4"	1/4"	\$ 3.72	5	\$ 18.59
PC127NB-6	3/8"	3/8"	\$ 4.46	5	\$ 22.30
PC127NB-8	1/2"	1/2"	\$ 11.45	5	\$ 57.27

## MALE TEE



Part #	NPT M	List Price	QTY	Pkg. Price
PC128B-2	1/8"	\$ 4.50	5	\$ 22.50
PC128B-4	1/4"	\$ 4.09	5	\$ 20.45
PC128B-6	3/8"	\$ 6.49	5	\$ 32.46
PC128B-8	1/2"	\$ 10.18	5	\$ 50.92



Part #	NPT M	List Price	QTY	Pkg. Price
PC128NB-2	1/8"	\$ 4.74	5	\$ 23.68
PC128NB-4	1/4"	\$ 4.27	5	\$ 21.37
PC128NB-6	3/8"	\$ 6.47	5	\$ 32.37
PC128NB-8	1/2"	\$ 9.73	5	\$ 48.65

## BRANCH TEE



Part #	NPT M	NPT F	List Price	QTY	Pkg. Price
PC132B-2	1/8"	1/8"	\$ 2.42	5	\$ 12.10
PC132B-4	1/4"	1/4"	\$ 5.08	5	\$ 25.38
PC132B-6	3/8"	3/8"	\$ 7.66	5	\$ 38.32
PC132B-8	1/2"	1/2"	\$ 11.46	5	\$ 57.32



Part #	NPT M	NPT F	List Price	QTY	Pkg. Price
PC132NB-2	1/8"	1/8"	\$ 2.74	5	\$ 13.70
PC132NB-4	1/4"	1/4"	\$ 5.17	5	\$ 25.85
PC132NB-6	3/8"	3/8"	\$ 9.22	5	\$ 46.10
PC132NB-8	1/2"	1/2"	\$ 15.74	5	\$ 78.72



Now that you have your  
Fittings don't forget  
your tubing!



Polyconn offers Push-In  
fittings in many different  
materials!



Polyconn carries Polyurethane,  
Nylon, Polyethylene and many  
more materials to choose from!

Available Materials:  
Composite  
Plastic  
Nickel Plated Brass  
Stainless Steel  
D.O.T. Brass

**Polyconn**<sup>®</sup> the one-stop shop for your  
pneumatic needs.