

**POLY
CONN**

Master **W**AIRhouse®
Fluid Power Products



Stainless Steel Push-In Fittings



Version 2020

Revised 01/2020

Email your order to: sales@polyconn.com or fax to (763) 398-2590 · www.polyconn.com · Questions call: (763)559-0388

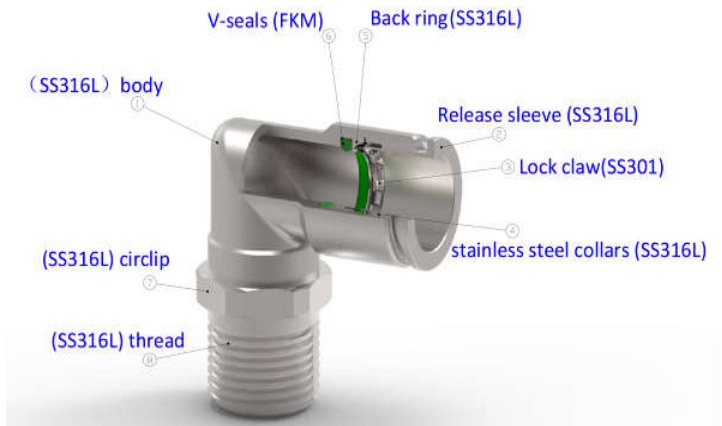
3062 Ranchview Lane North · Plymouth, MN 55447

Features and Specifications

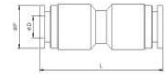
This stainless steel line is a great choice to use when acetal, brass, and or nickel plated brass fittings can not be used. The 316 stainless steel that is used in these fittings is designed to withstand corrosive environments or substances, to channel aggressive fluids and to be used in the food, pharmaceutical and chemical industries. These fittings come with Viton O-Ring to guarantee the best performance.

SPECIFICATIONS

Product	Temperature Range	Viton O-Ring Durometer	Pressure Range	Vacuum Rating
Stainless Steel Push-In Fitting	5°F to 230°F (-15° - 110°C)	75 Shore A (±5)	250 PSI	To 30" Hg

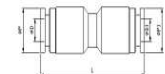


UNION TUBE



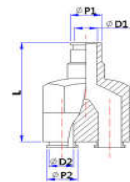
Part #	Push-In (D)	L	P	QTY	List Price
PC62SS-1-316	5/32"	1.46"	0.37"	1	\$ 14.76
PC62SS-4-316	1/4"	1.46"	0.45"	1	\$ 6.62
PC62SS-5-316	5/16"	1.57"	0.53"	1	\$ 7.22
PC62SS-6-316	3/8"	1.57"	0.61"	1	\$ 8.12
PC62SS-8-316	1/2"	1.77"	0.73"	1	\$ 8.72

UNION TUBE REDUCER



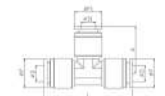
Part #	PI (D)	PI (D1)	L	P	P1	QTY	List Price
PC62SSR-14-316	5/32"	1/4"	1.46"	0.45"	0.37"	1	\$ 23.04
PC62SSR-54-316	5/16"	1/4"	1.57"	0.53"	0.45"	1	\$ 7.22
PC62SSR-64-316	3/8"	1/4"	N/A	N/A	N/A	1	\$ 8.12
PC62SSR-65-316	3/8"	5/16"	1.77"	0.61"	0.53"	1	\$ 8.12
PC62SSR-85-316	1/2"	5/16"	N/A	N/A	N/A	1	\$ 9.03
PC62SSR-86-316	1/2"	3/8"	1.77"	0.73"	0.61"	1	\$ 9.63

UNION Y



Part #	Push-In (D1/D2)	L	P1/P2	QTY	List Price
PC45SS-4-316	1/4"	1.69"	0.45"	1	\$ 15.23
PC45SS-5-316	5/16"	1.73"	0.53"	1	\$ 17.04
PC45SS-6-316	3/8"	1.97"	0.61"	1	\$ 17.94
PC45SS-8-316	1/2"	2.24"	0.73"	1	\$ 19.15

UNION TEE



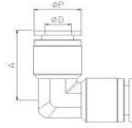
Part #	Push-In (D)	L	A	P	QTY	List Price
PC64SS-1-316	5/32"	1.73"	0.87"	0.37"	1	\$ 14.14
PC64SS-4-316	1/4"	1.73"	0.87"	0.45"	1	\$ 14.14
PC64SS-6-316	3/8"	2.13"	1.06"	0.61"	1	\$ 16.85
PC64SS-8-316	1/2"	2.36"	1.18"	0.73"	1	\$ 18.05

UNION TEE REDUCER



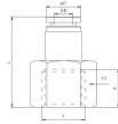
Part #	Push-In A	Push-In B	QTY	List Price
PC64SSR-54-316	5/16"	1/4"	1	\$ 15.95
PC64SSR-64-316	3/8"	1/4"	1	\$ 16.85
PC64SSR-65-316	3/8"	5/16"	1	\$ 17.15
PC64SSR-85-316	1/2"	5/16"	1	\$ 18.05
PC64SSR-86-316	1/2"	3/8"	1	\$ 18.35

UNION ELBOW



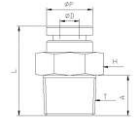
Part #	Push-In (D1)	A	PI	QTY	List Price
PC65SS-1-316	5/32"	0.87"	0.37"	1	\$ 23.47
PC65SS-4-316	1/4"	0.87"	0.45"	1	\$ 11.73
PC65SS-5-316	5/16"	0.95"	0.53"	1	\$ 12.34
PC65SS-6-316	3/8"	1.06"	0.61"	1	\$ 12.94
PC65SS-8-316	1/2"	1.18"	0.73"	1	\$ 13.84

FEMALE CONNECTOR



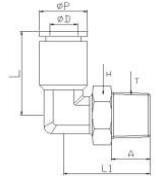
Part #	PI (D)	NPT F	A	L	P	H	QTY	List Price
PC66SS-10-316	5/32"	10-32	0.20"	0.98"	0.37"	12	1	\$ 11.96
PC66SS-12-316	5/32"	1/8"	0.33"	1.14"	0.37"	14	1	\$ 11.96
PC66SS-14-316	5/32"	1/4"	0.43"	1.18"	0.37"	17	1	\$ 15.98
PC66SS-40-316	1/4"	10-32	N/A	N/A	N/A	N/A	1	\$ 11.96
PC66SS-42-316	1/4"	1/8"	0.33"	1.14"	0.45"	14	1	\$ 7.22
PC66SS-44-316	1/4"	1/4"	0.43"	1.18"	0.45"	17	1	\$ 7.22
PC66SS-46-316	1/4"	3/8"	0.49"	1.26"	0.45"	19	1	\$ 7.52
PC66SS-48-316	1/4"	1/2"	0.59"	1.38"	0.45"	24	1	\$ 7.82
PC66SS-52-316	5/16"	1/8"	0.33"	1.14"	0.53"	14	1	\$ 7.22
PC66SS-54-316	5/16"	1/4"	0.43"	1.18"	0.53"	17	1	\$ 7.52
PC66SS-56-316	5/16"	3/8"	0.49"	1.26"	0.53"	19	1	\$ 7.52
PC66SS-58-316	5/16"	1/2"	0.59"	1.38"	0.53"	24	1	\$ 7.82
PC66SS-64-316	3/8"	1/4"	0.43"	1.18"	0.61"	17	1	\$ 8.12
PC66SS-66-316	3/8"	3/8"	0.49"	1.26"	0.61"	19	1	\$ 8.12
PC66SS-68-316	3/8"	1/2"	0.59"	1.38"	0.61"	24	1	\$ 8.72
PC66SS-84-316	1/2"	1/4"	0.43"	1.18"	0.73"	19	1	\$ 8.72
PC66SS-86-316	1/2"	3/8"	0.49"	1.26"	0.73"	19	1	\$ 8.72
PC66SS-88-316	1/2"	1/2"	0.59"	1.38"	0.73"	24	1	\$ 9.03

MALE CONNECTOR



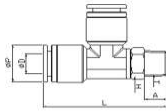
Part #	PI (D)	NPT M	A	L	P	H	QTY	List Price
PC68SS-10-316	5/32"	10-32	0.33"	0.43"	0.37"	10	1	\$ 10.24
PC68SS-12-316	5/32"	1/8"	0.33"	0.75"	0.37"	10	1	\$ 6.02
PC68SS-14-316	5/32"	1/4"	0.43"	0.91"	0.37"	14	1	\$ 6.02
PC68SS-40-316	1/4"	10-32	N/A	N/A	N/A	N/A	1	\$ 6.32
PC68SS-42-316	1/4"	1/8"	0.33"	0.91"	0.45"	12	1	\$ 6.02
PC68SS-44-316	1/4"	1/4"	0.43"	0.91"	0.45"	14	1	\$ 6.02
PC68SS-46-316	1/4"	3/8"	0.49"	0.96"	0.45"	17	1	\$ 6.92
PC68SS-48-316	1/4"	1/2"	0.59"	1.10"	0.45"	22	1	\$ 6.92
PC68SS-52-316	5/16"	1/8"	0.33"	1.02"	0.53"	14	1	\$ 6.32
PC68SS-54-316	5/16"	1/4"	0.43"	1.02"	0.53"	14	1	\$ 6.32
PC68SS-56-316	5/16"	3/8"	0.49"	0.96"	0.53"	17	1	\$ 6.92
PC68SS-58-316	5/16"	1/2"	0.59"	1.10"	0.53"	22	1	\$ 6.92
PC68SS-64-316	3/8"	1/4"	0.43"	1.10"	0.61"	17	1	\$ 6.92
PC68SS-66-316	3/8"	3/8"	0.49"	0.96"	0.61"	17	1	\$ 6.92
PC68SS-68-316	3/8"	1/2"	0.59"	1.10"	0.61"	22	1	\$ 7.52
PC68SS-84-316	1/2"	1/4"	0.43"	1.18"	0.73"	19	1	\$ 7.52
PC68SS-86-316	1/2"	3/8"	0.49"	0.96"	0.73"	19	1	\$ 7.52
PC68SS-88-316	1/2"	1/2"	0.59"	1.10"	0.73"	22	1	\$ 8.12

MALE ELBOW SWIVEL



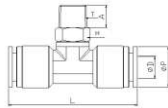
Part #	PI (D)	NPT M	A	L	P	H	Qty	List Price
PC69SS-10-316	5/32"	10-32	0.20"	0.87"	0.37"	12	1	\$ 20.38
PC69SS-12-316	5/32"	1/8"	N/A	N/A	N/A	N/A	1	\$ 20.38
PC69SS-14-316	5/32"	1/4"	0.39"	0.87"	0.37"	12	1	\$ 20.38
PC69SS-40-316	1/4"	10-32	N/A	N/A	N/A	N/A	1	\$ 12.34
PC69SS-42-316	1/4"	1/8"	0.33"	0.87"	0.45"	12	1	\$ 11.73
PC69SS-44-316	1/4"	1/4"	0.39"	0.87"	0.45"	14	1	\$ 11.73
PC69SS-46-316	1/4"	3/8"	0.43"	0.87"	0.45"	17	1	\$ 12.03
PC69SS-48-316	1/4"	1/2"	0.51"	0.87"	0.45"	22	1	\$ 13.24
PC69SS-52-316	5/16"	1/8"	0.33"	0.91"	0.53"	14	1	\$ 11.43
PC69SS-54-316	5/16"	1/4"	0.39"	0.91"	0.53"	14	1	\$ 11.43
PC69SS-56-316	5/16"	3/8"	0.43"	0.91"	0.53"	17	1	\$ 12.34
PC69SS-58-316	5/16"	1/2"	0.51"	0.91"	0.53"	22	1	\$ 13.24
PC69SS-64-316	3/8"	1/4"	0.39"	1.02"	0.61"	17	1	\$ 12.34
PC69SS-66-316	3/8"	3/8"	0.43"	1.02"	0.61"	17	1	\$ 12.64
PC69SS-68-316	3/8"	1/2"	0.51"	1.02"	0.61"	22	1	\$ 13.24
PC69SS-84-316	1/2"	1/4"	0.39"	1.18"	0.73"	19	1	\$ 13.54
PC69SS-86-316	1/2"	3/8"	0.43"	1.18"	0.73"	22	1	\$ 13.84
PC69SS-88-316	1/2"	1/2"	0.51"	1.18"	0.73"	22	1	\$ 14.44

TEE RUN SWIVEL



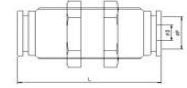
Part #	PI (D)	NPT M	A	P	H	QTY	List Price
PC71SS-10-316	5/32"	10-32	0.20"	0.37"	12	1	\$ 28.80
PC71SS-12-316	5/32"	1/8"	0.33"	0.37"	12	1	\$ 28.80
PC71SS-14-316	5/32"	1/4"	0.39"	0.37"	12	1	\$ 31.76
PC71SS-40-316	1/4"	10-32	N/A	N/A	N/A	1	\$ 28.80
PC71SS-42-316	1/4"	1/8"	0.33"	0.45"	12	1	\$ 13.84
PC71SS-44-316	1/4"	1/4"	0.39"	0.45"	14	1	\$ 13.84
PC71SS-46-316	1/4"	3/8"	0.43"	0.45"	17	1	\$ 13.84
PC71SS-48-316	1/4"	1/2"	0.51"	0.45"	22	1	\$ 16.85
PC71SS-52-316	5/16"	1/8"	0.33"	0.53"	14	1	\$ 15.64
PC71SS-54-316	5/16"	1/4"	0.39"	0.53"	14	1	\$ 16.25
PC71SS-56-316	5/16"	3/8"	0.43"	0.53"	17	1	\$ 16.25
PC71SS-58-316	5/16"	1/2"	0.51"	0.53"	22	1	\$ 16.85
PC71SS-64-316	3/8"	1/4"	0.39"	0.61"	17	1	\$ 16.85
PC71SS-66-316	3/8"	3/8"	0.43"	0.61"	17	1	\$ 16.85
PC71SS-68-316	3/8"	1/2"	0.51"	0.61"	22	1	\$ 17.45
PC71SS-84-316	1/2"	1/4"	0.39"	0.73"	19	1	\$ 17.45
PC71SS-86-316	1/2"	3/8"	0.43"	0.73"	19	1	\$ 17.45
PC71SS-88-316	1/2"	1/2"	0.51"	0.73"	22	1	\$ 17.45

TEE BRANCH SWIVEL



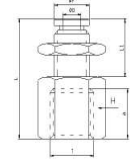
Part #	PI (D)	NPT M	A	L	P	H	QTY	List Price
PC72SS-10-316	5/32"	10-32	0.20"	1.73"	0.37"	12	1	\$ 28.80
PC72SS-12-316	5/32"	1/8"	0.33"	1.73"	0.37"	12	1	\$ 28.80
PC72SS-14-316	5/32"	1/4"	0.39"	1.73"	0.37"	12	1	\$ 31.76
PC72SS-40-316	1/4"	10-32	N/A	N/A	N/A	N/A	1	\$ 14.44
PC72SS-42-316	1/4"	1/8"	0.33"	1.73"	0.45"	12	1	\$ 13.84
PC72SS-44-316	1/4"	1/4"	0.39"	1.73"	0.45"	14	1	\$ 13.84
PC72SS-46-316	1/4"	3/8"	0.43"	1.73"	0.45"	17	1	\$ 13.84
PC72SS-48-316	1/4"	1/2"	0.51"	1.73"	0.45"	22	1	\$ 16.85
PC72SS-52-316	5/16"	1/8"	0.33"	1.89"	0.53"	14	1	\$ 15.64
PC72SS-54-316	5/16"	1/4"	0.39"	1.89"	0.53"	14	1	\$ 16.16
PC72SS-56-316	5/16"	3/8"	0.43"	1.89"	0.53"	17	1	\$ 16.25
PC72SS-58-316	5/16"	1/2"	0.51"	1.89"	0.53"	22	1	\$ 16.85
PC72SS-64-316	3/8"	1/4"	0.39"	2.13"	0.61"	17	1	\$ 16.85
PC72SS-66-316	3/8"	3/8"	0.43"	2.13"	0.61"	17	1	\$ 16.85
PC72SS-68-316	3/8"	1/2"	0.51"	2.13"	0.61"	22	1	\$ 17.45
PC72SS-84-316	1/2"	1/4"	0.39"	2.36"	0.73"	19	1	\$ 17.45
PC72SS-86-316	1/2"	3/8"	0.43"	2.36"	0.73"	19	1	\$ 17.45
PC72SS-88-316	1/2"	1/2"	0.51"	2.36"	0.73"	22	1	\$ 17.45

BULKHEAD UNION



Part #	PI (D)	T	L	P	QTY	List Price
PC82SS-11-316	5/32"	11X1	1.54"	0.37"	1	\$ 19.58
PC82SS-44-316	1/4"	13X1	1.54"	0.45"	1	\$ 10.23
PC82SS-55-316	5/16"	15X1	1.61"	0.53"	1	\$ 10.83
PC82SS-66-316	3/8"	17X1	1.61"	0.61"	1	\$ 11.13
PC82SS-88-316	1/2"	21X1	1.65"	0.73"	1	\$ 12.03

FEMALE BULKHEAD



Part #	PI (D)	NPT F	A	L	P	H	QTY	List Price
PC86SS-10-316	5/32"	10-32	0.20"	0.98"	0.37"	12	1	\$ 27.80
PC86SS-12-316	5/32"	1/8"	0.33"	1.14"	0.37"	14	1	\$ 27.80
PC86SS-14-316	5/32"	1/4"	0.43"	1.18"	0.37"	17	1	\$ 30.76
PC86SS-40-316	1/4"	10-32	N/A	N/A	N/A	N/A	1	\$ 31.53
PC86SS-42-316	1/4"	1/8"	0.33"	1.14"	0.45"	14	1	\$ 8.59
PC86SS-44-316	1/4"	1/4"	0.43"	1.18"	0.45"	17	1	\$ 8.59
PC86SS-46-316	1/4"	3/8"	0.49"	1.26"	0.45"	19	1	\$ 8.89
PC86SS-48-316	1/4"	1/2"	0.59"	1.38"	0.45"	24	1	\$ 9.19
PC86SS-52-316	5/16"	1/8"	0.33"	1.14"	0.53"	14	1	\$ 8.59
PC86SS-54-316	5/16"	1/4"	0.43"	1.18"	0.53"	17	1	\$ 8.89
PC86SS-56-316	5/16"	3/8"	0.49"	1.26"	0.53"	19	1	\$ 8.89
PC86SS-58-316	5/16"	1/2"	0.59"	1.38"	0.53"	24	1	\$ 9.19
PC86SS-64-316	3/8"	1/4"	0.43"	1.18"	0.61"	17	1	\$ 10.86
PC86SS-66-316	3/8"	3/8"	0.49"	1.26"	0.61"	19	1	\$ 10.86
PC86SS-68-316	3/8"	1/2"	0.59"	1.38"	0.61"	24	1	\$ 11.46
PC86SS-84-316	1/2"	1/4"	0.43"	1.18"	0.73"	19	1	\$ 11.46
PC86SS-86-316	1/2"	3/8"	0.49"	1.26"	0.73"	19	1	\$ 11.46
PC86SS-88-316	1/2"	1/2"	0.59"	1.38"	0.73"	24	1	\$ 11.76

Now that you have your
Fittings don't forget
your tubing!



Polyconn offers Push-In
fittings in many different
materials!



Polyconn carries Polyurethane,
Nylon, Polyethylene and many
more materials to choose from!

Available Materials:
Composite
Plastic
Nickel Plated Brass
Stainless Steel
D.O.T. Brass

Polyconn[®] the one-stop shop for your
pneumatic needs.