

POLY CONN[®]

Master WAIRhouse[®]
Fluid Power Products

STAINLESS STEEL PUSH TO CONNECT FITTINGS



EMAIL

insidesales@polyconn.com

WEBSITE

www.polyconn.com

QUESTIONS

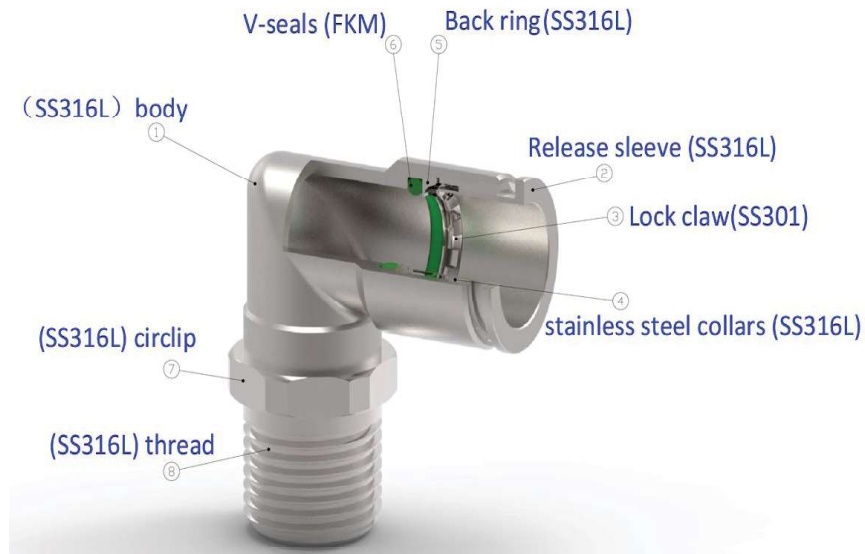
(763) 559-0388

Features and Specifications for Stainless Steel Push to Connect Fittings

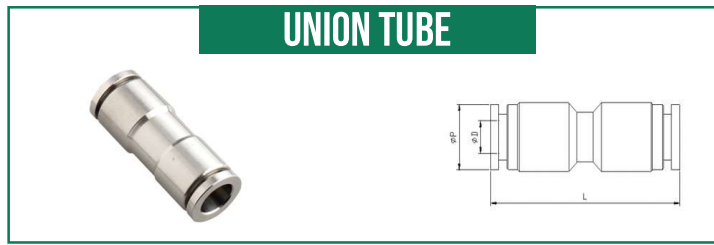
This stainless steel line is a great choice to use when acetal, brass, and or nickel plated brass fittings can not be used. The 316L stainless steel that is used in these fittings is designed to withstand corrosive environments or substances, to channel aggressive fluids and to be used in the food, pharmaceutical and chemical industries. These fittings come with Viton O-Rings to guarantee the best performance.

SPECIFICATIONS

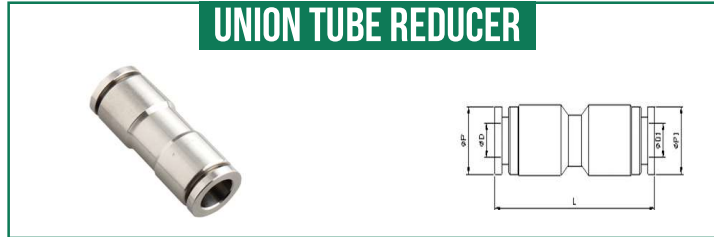
TEMPERATURE RANGE	PRESSURE RANGE	O-RING MATERIAL	VACUUM RATING
5°F - 230°F (-15°C - 110°C)	0-250 PSI	Viton 75 Shore A	To 30" Hg



Part #	PTC (D1/D2)	L	P1/P2	QTY	List Price
PC45SS-4-316	1/4"	1.69"	0.45"	1	\$ 15.23
PC45SS-5-316	5/16"	1.73"	0.53"	1	\$ 17.04
PC45SS-6-316	3/8"	1.97"	0.61"	1	\$ 17.94
PC45SS-8-316	1/2"	2.24"	0.73"	1	\$ 19.15



Part #	PTC (D)	L	P	QTY	List Price
PC62SS-4-316	1/4"	1.46"	0.45"	1	\$ 6.62
PC62SS-5-316	5/16"	1.57"	0.53"	1	\$ 7.22
PC62SS-6-316	3/8"	1.57"	0.61"	1	\$ 8.12
PC62SS-8-316	1/2"	1.77"	0.73"	1	\$ 8.72



Part #	PTC (D)	PTC (D1)	L	P	P1	QTY	List Price
PC62SSR-54-316	5/16"	1/4"	1.57"	0.53"	0.45"	1	\$ 7.22
PC62SSR-64-316	3/8"	1/4"	N/A	N/A	N/A	1	\$ 8.12
PC62SSR-65-316	3/8"	5/16"	1.77"	0.61"	0.53"	1	\$ 8.12
PC62SSR-85-316	1/2"	5/16"	N/A	N/A	N/A	1	\$ 9.03
PC62SSR-86-316	1/2"	3/8"	1.77"	0.73"	0.61"	1	\$ 9.63



Part #	PTC (D)	L	A	P	QTY	List Price
PC64SS-1-316	5/32"	1.73"	0.87"	0.37"	1	\$ 14.14
PC64SS-4-316	1/4"	1.73"	0.87"	0.45"	1	\$ 14.14
PC64SS-6-316	3/8"	2.13"	1.06"	0.61"	1	\$ 16.85
PC64SS-8-316	1/2"	2.36"	1.18"	0.73"	1	\$ 18.05



Part #	PTC A	PTC B	QTY	List Price
PC64SSR-54-316	5/16"	1/4"	1	\$ 15.95
PC64SSR-64-316	3/8"	1/4"	1	\$ 16.85
PC64SSR-65-316	3/8"	5/16"	1	\$ 17.15
PC64SSR-85-316	1/2"	5/16"	1	\$ 18.05
PC64SSR-86-316	1/2"	3/8"	1	\$ 18.35



Part #	PTC (D)	A	P	QTY	List Price
PC65SS-4-316	1/4"	0.87"	0.45"	1	\$ 11.73
PC65SS-5-316	5/16"	0.95"	0.53"	1	\$ 12.34
PC65SS-6-316	3/8"	1.06"	0.61"	1	\$ 12.94
PC65SS-8-316	1/2"	1.18"	0.73"	1	\$ 13.84



Part #	PTC (D)	NPT F	A	L	P	H	QTY	List Price
PC66SS-42-316	1/4"	1/8"	0.33"	1.14"	0.45"	14	1	\$ 7.22
PC66SS-44-316	1/4"	1/4"	0.43"	1.18"	0.45"	17	1	\$ 7.22
PC66SS-46-316	1/4"	3/8"	0.49"	1.26"	0.45"	19	1	\$ 7.52
PC66SS-48-316	1/4"	1/2"	0.59"	1.38"	0.45"	24	1	\$ 7.82
PC66SS-52-316	5/16"	1/8"	0.33"	1.14"	0.53"	14	1	\$ 7.22
PC66SS-54-316	5/16"	1/4"	0.43"	1.18"	0.53"	17	1	\$ 7.52
PC66SS-56-316	5/16"	3/8"	0.49"	1.26"	0.53"	19	1	\$ 7.52
PC66SS-58-316	5/16"	1/2"	0.59"	1.38"	0.53"	24	1	\$ 7.82
PC66SS-64-316	3/8"	1/4"	0.43"	1.18"	0.61"	17	1	\$ 8.12
PC66SS-66-316	3/8"	3/8"	0.49"	1.26"	0.61"	19	1	\$ 8.12
PC66SS-68-316	3/8"	1/2"	0.59"	1.38"	0.61"	24	1	\$ 8.72
PC66SS-84-316	1/2"	1/4"	0.43"	1.18"	0.73"	19	1	\$ 8.72
PC66SS-86-316	1/2"	3/8"	0.49"	1.26"	0.73"	19	1	\$ 8.72
PC66SS-88-316	1/2"	1/2"	0.59"	1.38"	0.73"	24	1	\$ 9.03



Service Your Pneumatic Needs For Over 40 Years

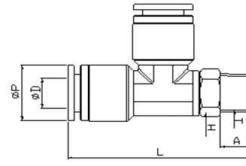


Part #	PTC (D)	NPT M	A	L	P	H	QTY	List Price
PC68SS-40-316	1/4"	10-32 UNF	N/A	N/A	N/A	N/A	1	\$ 6.32
PC68SS-42-316	1/4"	1/8"	0.33"	0.91"	0.45"	12	1	\$ 6.02
PC68SS-44-316	1/4"	1/4"	0.43"	0.91"	0.45"	14	1	\$ 6.02
PC68SS-46-316	1/4"	3/8"	0.49"	0.96"	0.45"	17	1	\$ 6.92
PC68SS-48-316	1/4"	1/2"	0.59"	1.10"	0.45"	22	1	\$ 6.92
PC68SS-52-316	5/16"	1/8"	0.33"	1.02"	0.53"	14	1	\$ 6.32
PC68SS-54-316	5/16"	1/4"	0.43"	1.02"	0.53"	14	1	\$ 6.32
PC68SS-56-316	5/16"	3/8"	0.49"	0.96"	0.53"	17	1	\$ 6.92
PC68SS-58-316	5/16"	1/2"	0.59"	1.10"	0.53"	22	1	\$ 6.92
PC68SS-64-316	3/8"	1/4"	0.43"	1.10"	0.61"	17	1	\$ 6.92
PC68SS-66-316	3/8"	3/8"	0.49"	0.96"	0.61"	17	1	\$ 6.92
PC68SS-68-316	3/8"	1/2"	0.59"	1.10"	0.61"	22	1	\$ 7.52
PC68SS-84-316	1/2"	1/4"	0.43"	1.18"	0.73"	19	1	\$ 7.52
PC68SS-86-316	1/2"	3/8"	0.49"	0.96"	0.73"	19	1	\$ 7.52
PC68SS-88-316	1/2"	1/2"	0.59"	1.10"	0.73"	22	1	\$ 8.12



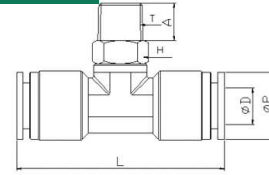
Part #	PTC (D)	NPT M	A	L	P	H	QTY	List Price
PC69SS-40-316	1/4"	10-32 UNF	N/A	N/A	N/A	N/A	1	\$ 12.34
PC69SS-42-316	1/4"	1/8"	0.33"	0.87"	0.45"	12	1	\$ 11.73
PC69SS-44-316	1/4"	1/4"	0.39"	0.87"	0.45"	14	1	\$ 11.73
PC69SS-46-316	1/4"	3/8"	0.43"	0.87"	0.45"	17	1	\$ 12.03
PC69SS-48-316	1/4"	1/2"	0.51"	0.87"	0.45"	22	1	\$ 13.24
PC69SS-52-316	5/16"	1/8"	0.33"	0.91"	0.53"	14	1	\$ 11.43
PC69SS-54-316	5/16"	1/4"	0.39"	0.91"	0.53"	14	1	\$ 11.43
PC69SS-56-316	5/16"	3/8"	0.43"	0.91"	0.53"	17	1	\$ 12.34
PC69SS-58-316	5/16"	1/2"	0.51"	0.91"	0.53"	22	1	\$ 13.24
PC69SS-64-316	3/8"	1/4"	0.39"	1.02"	0.61"	17	1	\$ 12.34
PC69SS-66-316	3/8"	3/8"	0.43"	1.02"	0.61"	17	1	\$ 12.64
PC69SS-68-316	3/8"	1/2"	0.51"	1.02"	0.61"	22	1	\$ 13.24
PC69SS-84-316	1/2"	1/4"	0.39"	1.18"	0.73"	19	1	\$ 13.54
PC69SS-86-316	1/2"	3/8"	0.43"	1.18"	0.73"	22	1	\$ 13.84
PC69SS-88-316	1/2"	1/2"	0.51"	1.18"	0.73"	22	1	\$ 14.44

TEE RUN SWIVEL

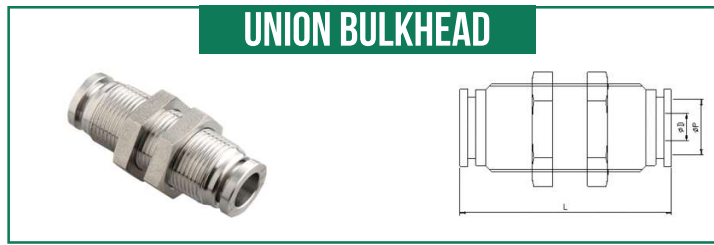


Part #	PTC (D)	NPT M	A	P	H	QTY	List Price
PC71SS-42-316	1/4"	1/8"	0.33"	0.45"	12	1	\$ 13.84
PC71SS-44-316	1/4"	1/4"	0.39"	0.45"	14	1	\$ 13.84
PC71SS-46-316	1/4"	3/8"	0.43"	0.45"	17	1	\$ 13.84
PC71SS-48-316	1/4"	1/2"	0.51"	0.45"	22	1	\$ 16.85
PC71SS-52-316	5/16"	1/8"	0.33"	0.53"	14	1	\$ 15.64
PC71SS-54-316	5/16"	1/4"	0.39"	0.53"	14	1	\$ 16.25
PC71SS-56-316	5/16"	3/8"	0.43"	0.53"	17	1	\$ 16.25
PC71SS-58-316	5/16"	1/2"	0.51"	0.53"	22	1	\$ 16.85
PC71SS-64-316	3/8"	1/4"	0.39"	0.61"	17	1	\$ 16.85
PC71SS-66-316	3/8"	3/8"	0.43"	0.61"	17	1	\$ 16.85
PC71SS-68-316	3/8"	1/2"	0.51"	0.61"	22	1	\$ 17.45
PC71SS-84-316	1/2"	1/4"	0.39"	0.73"	19	1	\$ 17.45
PC71SS-86-316	1/2"	3/8"	0.43"	0.73"	19	1	\$ 17.45
PC71SS-88-316	1/2"	1/2"	0.51"	0.73"	22	1	\$ 17.45

TEE BRANCH SWIVEL



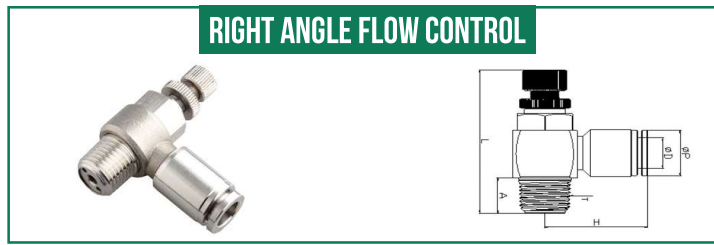
Part #	PTC (D)	NPT M	A	L	P	H	QTY	List Price
PC72SS-42-316	1/4"	1/8"	0.33"	1.73"	0.45"	12	1	\$ 13.84
PC72SS-44-316	1/4"	1/4"	0.39"	1.73"	0.45"	14	1	\$ 13.84
PC72SS-46-316	1/4"	3/8"	0.43"	1.73"	0.45"	17	1	\$ 13.84
PC72SS-48-316	1/4"	1/2"	0.51"	1.73"	0.45"	22	1	\$ 16.85
PC72SS-52-316	5/16"	1/8"	0.33"	1.89"	0.53"	14	1	\$ 15.64
PC72SS-54-316	5/16"	1/4"	0.39"	1.89"	0.53"	14	1	\$ 16.16
PC72SS-56-316	5/16"	3/8"	0.43"	1.89"	0.53"	17	1	\$ 16.25
PC72SS-58-316	5/16"	1/2"	0.51"	1.89"	0.53"	22	1	\$ 16.85
PC72SS-64-316	3/8"	1/4"	0.39"	2.13"	0.61"	17	1	\$ 16.85
PC72SS-66-316	3/8"	3/8"	0.43"	2.13"	0.61"	17	1	\$ 16.85
PC72SS-68-316	3/8"	1/2"	0.51"	2.13"	0.61"	22	1	\$ 17.45
PC72SS-84-316	1/2"	1/4"	0.39"	2.36"	0.73"	19	1	\$ 17.45
PC72SS-86-316	1/2"	3/8"	0.43"	2.36"	0.73"	19	1	\$ 17.45
PC72SS-88-316	1/2"	1/2"	0.51"	2.36"	0.73"	22	1	\$ 17.45



Part #	PTC (D)	T	L	P	QTY	List Price
PC82SS-44-316	1/4"	13x1	1.54"	0.45"	1	\$ 10.23
PC82SS-55-316	5/16"	15x1	1.61"	0.53"	1	\$ 10.83
PC82SS-66-316	3/8"	17x1	1.61"	0.61"	1	\$ 11.13
PC82SS-88-316	1/2"	21x1	1.65"	0.73"	1	\$ 12.03



Part #	PTC (D)	NPT F	A	L	P	H	QTY	List Price
PC86SS-42-316	1/4"	1/8"	0.33"	1.14"	0.45"	14	1	\$ 8.59
PC86SS-44-316	1/4"	1/4"	0.43"	1.18"	0.45"	17	1	\$ 8.59
PC86SS-46-316	1/4"	3/8"	0.49"	1.26"	0.45"	19	1	\$ 8.89
PC86SS-48-316	1/4"	1/2"	0.59"	1.38"	0.45"	24	1	\$ 9.19
PC86SS-52-316	5/16"	1/8"	0.33"	1.14"	0.53"	14	1	\$ 8.59
PC86SS-54-316	5/16"	1/4"	0.43"	1.18"	0.53"	17	1	\$ 8.89
PC86SS-56-316	5/16"	3/8"	0.49"	1.26"	0.53"	19	1	\$ 8.89
PC86SS-58-316	5/16"	1/2"	0.59"	1.38"	0.53"	24	1	\$ 9.19
PC86SS-64-316	3/8"	1/4"	0.43"	1.18"	0.61"	17	1	\$ 10.86
PC86SS-66-316	3/8"	3/8"	0.49"	1.26"	0.61"	19	1	\$ 10.86
PC86SS-68-316	3/8"	1/2"	0.59"	1.38"	0.61"	24	1	\$ 11.46
PC86SS-84-316	1/2"	1/4"	0.43"	1.18"	0.73"	19	1	\$ 11.46
PC86SS-86-316	1/2"	3/8"	0.49"	1.26"	0.73"	19	1	\$ 11.46
PC86SS-88-316	1/2"	1/2"	0.59"	1.38"	0.73"	24	1	\$ 11.76



Part #	PTC (D)	NPT M	A	P	H	QTY	List Price
PCSC2-42SSR	1/4"	1/8"	0.33"	0.45"	30	1	\$ 48.14
PCSC2-44SSR	1/4"	1/4"	0.39"	0.45"	32	1	\$ 48.14
PCSC2-46SSR	1/4"	3/8"	0.43"	0.45"	32	1	\$ 51.15
PCSC2-48SSR	1/4"	1/2"	0.51"	0.45"	32	1	\$ 54.15
PCSC2-52SSR	5/16"	1/8"	0.33"	0.53"	30	1	\$ 48.14
PCSC2-54SSR	5/16"	1/4"	0.39"	0.53"	32	1	\$ 48.14
PCSC2-56SSR	5/16"	3/8"	0.43"	0.53"	32	1	\$ 51.15
PCSC2-58SSR	5/16"	1/2"	0.51"	0.53"	32	1	\$ 54.15
PCSC2-64SSR	3/8"	1/4"	0.39"	0.61"	32	1	\$ 54.15
PCSC2-66SSR	3/8"	3/8"	0.43"	0.61"	32	1	\$ 56.56
PCSC2-68SSR	3/8"	1/2"	0.51"	0.61"	32	1	\$ 60.17
PCSC2-84SSR	1/2"	1/4"	0.39"	0.73"	32	1	\$ 60.17
PCSC2-86SSR	1/2"	3/8"	0.43"	0.73"	32	1	\$ 63.18
PCSC2-88SSR	1/2"	1/2"	0.51"	0.73"	32	1	\$ 67.69
Metered Out							



Servicing Your Pneumatic Needs For Over 40 Years

See our full line of inch and metric tubing on our web site.
www.polyonn.com

Polyconn offers Push-In fittings in many different materials!



Tubing:
Polyconn carries
Polyurethane, Nylon,
Polyethylene and many
more materials to choose
from!

Push to Connect Fittings:
Composite
NSF Acetal Plastic
Nickel Plated Brass
Stainless Steel
D.O.T. Brass
D.O.T Composite

**Polyconn® the one-stop shop for your
pneumatic needs.**