

POLY CONN[®]

Servicing Your Pneumatic Needs For Over 40 Years

MUFFLER'S & BREATHER'S

EMAIL

insidesales@polyconn.com

WEBSITE

www.polyconn.com

QUESTIONS

(763) 559-0388



Features and Specifications for Breather Vents

These low-profile breather vents have many applications. They are most often used on single acting cylinders or valves to prevent dirt and foreign particles from entering ports open to the atmosphere. Common uses can also be found on vacuum relief or pressure equalization for gear boxes, crank cases, storage tanks or other vessels whenever pressure equalization is required.

Supplied with standard male pipe threads, they can be installed, with little protrusion, as a flat integral part of the equipment. Unit should be mounted in a protective position from excessive vibration. Use wrench on hex head to tighten unit to the device. The filter element used in the standard breather vent is rated for 40-micron filtration.

SPECIFICATIONS

TEMPERATURE RANGE	MAX OPERATON PRESSURE	ELEMENT MATERIAL
35°F - 300°F (1.6°C - 149°C)	150 PSI	Sintered Bronze 40 µm

BREATHER VENTS



Part #	NPT M	Body	OAL	Hex	List Price	QTY	Pkg Price
PCFBR-10-32	10-32 UNF	BRASS	11/32"	5/16"	\$ 0.88	5	\$ 4.38
PCFBR-01	1/16"	BRASS	13/32"	3/8"	\$ 2.95	5	\$ 14.75
PCFBR-02	1/8"	BRASS	1/2"	7/16"	\$ 1.10	5	\$ 5.50
PCFBR-04	1/4"	BRASS	11/16"	9/16"	\$ 1.76	5	\$ 8.81
PCFBR-06	3/8"	BRASS	27/32"	11/16"	\$ 2.91	5	\$ 14.56
PCFBR-08	1/2"	BRASS	31/32"	7/8"	\$ 5.01	5	\$ 25.06
PCFBR-12	3/4"	BRASS	1-7/64"	1-9/64"	\$ 10.09	1	\$ 10.09
PCFBR-16	1"	BRASS	1-11/32"	1-11/32"	\$ 14.51	1	\$ 14.51



Part #	NPT M	Body	OAL	Hex	List Price	QTY	Pkg Price
PCFBR-02-ZS	1/8"	ZINC STEEL	1/2"	7/16"	\$ 0.91	5	\$ 4.56
PCFBR-06-ZS	3/8"	ZINC STEEL	27/32"	11/16"	\$ 1.65	5	\$ 8.25
PCFBR-08-ZS	1/2"	ZINC STEEL	63/64"	7/8"	\$ 2.41	5	\$ 12.06
PCFBR-12-ZS	3/4"	ZINC STEEL	1-3/16"	1-1/8"	\$ 4.66	5	\$ 23.31
PCFBR-16-ZS	1"	ZINC STEEL	1-11/32"	1-63/64"	\$ 6.89	1	\$ 6.89
PCFBR-20-ZS	1-1/4"	ZINC STEEL	1-31/64"	1-3/4"	\$ 14.64	1	\$ 14.64
PCFBR-24-ZS	1-1/2"	ZINC STEEL	1-9/16"	1-31/32"	\$ 17.41	1	\$ 17.41
PCFBR-32-ZS	2"	ZINC STEEL	1-31/64"	2-23/64"	\$ 26.90	1	\$ 26.90

Features and Specifications for High Flow Steel Muffler

These steel mufflers utilize a 50 mesh, self-cleaning Stainless Steel Screen in a tough steel shell to withstand shock and continuous heavy duty use in all applications.

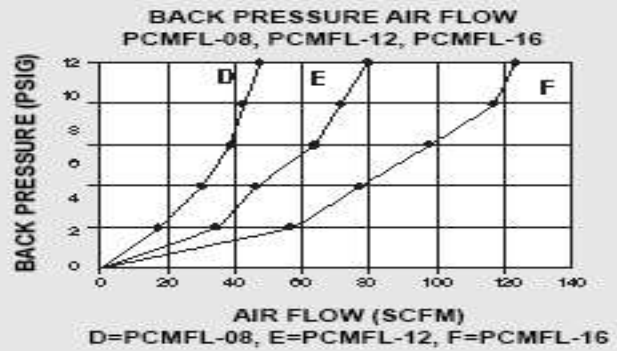
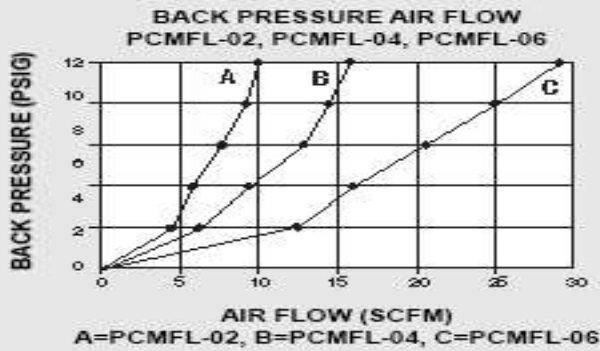
Designed with evenly distributed small holes around the steel shell, exhaust air quietly disperses over a 360° pattern without restricting air flow. Their slim profile allows them to be installed anywhere space is limited. Install directly to the exhaust ports of pneumatic valves, or closely spaced manifold ports is possible without interference with other ports.

Unit should be mounted in a protective position free from excessive vibration. Use wrench on hex head to tighten unit to the exhaust ports of air-operated equipment.

SPECIFICATIONS

TEMPERATURE RANGE	MAX OPERATON PRESSURE	ELEMENT MATERIAL
35°F - 160°F (1.6°C - 70°C)	300 PSI (21.1 kg/cm ²)	50 Mesh Stainless Steel Screen

FLOW CHARACTERISTICS - HIGH FLOW STEEL MUFFLER



HIGH FLOW STEEL MUFFLER



Part #	NPT M	Body	OAL	Hex	List Price	QTY	Pkg Price
PCMFL-02	1/8"	STEEL	1-5/16"	7/16"	\$ 3.66	5	\$ 18.31
PCMFL-04	1/4"	STEEL	1-11/16"	9/16"	\$ 4.26	5	\$ 21.31
PCMFL-06	3/8"	STEEL	2-7/64"	11/16"	\$ 5.93	5	\$ 29.63
PCMFL-08	1/2"	STEEL	2-41/64"	7/8"	\$ 6.94	5	\$ 34.69
PCMFL-12	3/4"	STEEL	3-15/64"	1-1/16"	\$ 10.41	1	\$ 10.41
PCMFL-16	1"	STEEL	3-25/32"	1-5/16"	\$ 13.55	1	\$ 13.55
PCMFL-20	1-1/4"	STEEL	4-27/64"	1-3/4"	\$ 25.66	1	\$ 25.66
PCMFL-24	1-1/2"	STEEL	4-16/16"	2"	\$ 29.16	1	\$ 29.16
PCMFL-32	2"	STEEL	5-19/32"	2-3/8"	\$ 39.33	1	\$ 39.33

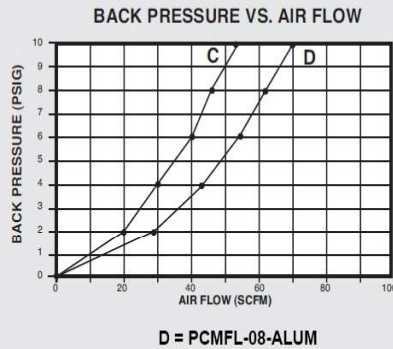
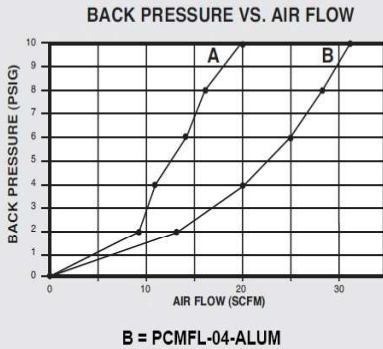
Features and Specifications for High Flow Aluminum Muffler

These aluminum mufflers utilize a 50 mesh, self-cleaning Stainless Steel Screen, and combined with corrosion-resistant aluminum shell to create a highly efficient, ultra-quiet muffler designed with minimal back pressure. When installed on the exhaust ports of pneumatic valves or manifolds, the aluminum body muffler provides a quick and inexpensive way to reduce work area noise while preventing contamination from entering the inside of the pneumatic valves. Unit should be mounted in a protective position free from excessive vibration. Use wrench on flats to tighten unit to the device.

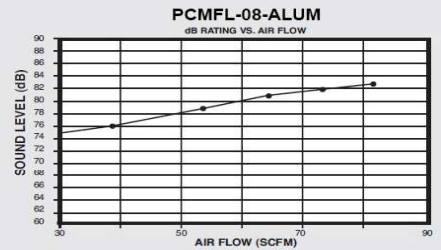
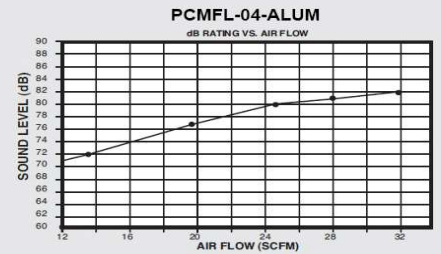
SPECIFICATIONS

TEMPERATURE RANGE	MAX OPERATON PRESSURE	ELEMENT MATERIAL
35°F - 160°F (1.6°C - 70°C)	300 PSI (21.1 kg/cm ²)	50 Mesh Stainless Steel Screen

FLOW CHARACTERISTICS



SOUND CHARACTERISTICS



HIGH FLOW ALUMINUM MUFFLER



Part #	NPT M	Body	OAL	Hex	List Price	QTY	Pkg Price
PCMFL-04-ALUM	1/4"	ALUMINUM	1-27/32"	13/16"	\$ 8.58	5	\$ 42.88
PCMFL-08-ALUM	1/2"	ALUMINUM	3-19/64"	1-1/4"	\$ 11.86	5	\$ 59.31

Features and Specifications for High Flow Polyethylene Muffler

The Polyethylene muffler has a high-density porous body ultrasonically welded to the solid polyethylene base. It is light weight, durable, highly effective for noise reduction without excessive back pressure. The unique structure channels escaping air to reduce the noise level within OSHA requirements.

The durable porous polyethylene body can withstand high working pressures up to 150 PSI. In an unlikely event of a blowout, the resilient plastic body will not shatter. The muffler is completely non-corrosive and highly resistant to water and oil. Usually present in compressed air lines and can be easily cleaned with methylene chloride or similar cleansing fluid. This muffler should be mounted in a protective position free from excessive vibration. Hand tighten ONLY to secure the device.

SPECIFICATIONS

TEMPERATURE RANGE	MAX OPERATON PRESSURE	ELEMENT MATERIAL
41°F - 140°F (5°C - 60°C)	150 PSI (10.5 kg/cm ²)	Polyethylene

HIGH FLOW POLYETHYLENE MUFFLER



Part #	NPT M	Body	OAL	Diameter	List Price	QTY	Pkg Price
PCMFL-06-PL	3/8"	POLYETHYLENE	2-13/16"	1"	\$ 2.54	5	\$ 12.69
PCMFL-08-PL	1/2"	POLYETHYLENE	3-5/32"	1"	\$ 3.70	5	\$ 18.50

Features and Specifications for Sintered Bronze Muffler

The Sintered Bronze Exhaust Muffler utilizes a porous filter element secured to a standard pip fitting. These compact and inexpensive mufflers are easy to install and maintain. They are used to diffuse air and muffle noise from the exhaust ports of air valves, air cylinders and air tools to an acceptable level within OSHA noise requirements.

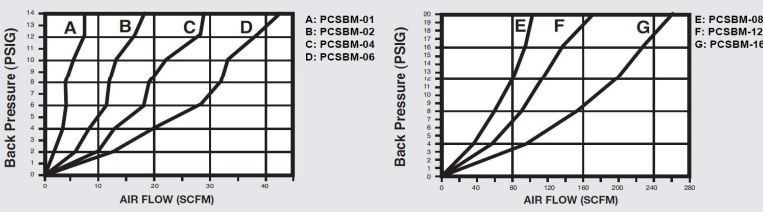
These can also be used as filters for gasoline, oil, air exhaust, intake filtering, coalescing of oil mist or water vapor, among other applications.

Unit should be mounted in a protective position free from excessive vibration. Use wrench on hex head to tighten unit to the device.

SPECIFICATIONS

TEMPERATURE RANGE	MAX OPERATON PRESSURE	ELEMENT MATERIAL
35°F - 300°F (1.6°C - 149°C)	300 PSI (21.1 kg/cm ²)	Sintered Bronze 40 µm

FLOW CHARACTERISTICS - PNEUMATIC EXHAUST MUFFLER



SOUND CHARACTERISTICS - PNEUMATIC EXHAUST MUFFLER

BACK PRESSURE (PSIG)	PCSBM-01		PCSBM-02		PCSBM-04		PCSBM-06		PCSBM-08		PCSBM-12		PCSBM-16	
	FLOW (SCFM)	db	FLOW (SCFM)	db	FLOW (SCFM)	db	FLOW (SCFM)	db	FLOW (SCFM)	db	FLOW (SCFM)	db	FLOW (SCFM)	db
2	1.1	72	7	72	10	73	12	74	26.6	75	39.4	76	67	93
4	2.3	72	9	73	12	74	20	74	39.5	76	62.0	80	104	95
6	3.6	72	11	73	17	74	26	74	49.9	77	80.7	88	134	97
8	5.0	73	12	73	19	74	31	75	60.9	80	97.0	93	154	100
10	5.2	73	13	74	23	75	35	76	71.3	86	110.2	96	181	101
12	7.4	74	15	74	23	75	39	76	79.5	87	121.3	97	210	102
14	8.0	74	17	75	29	76	43	77	86.6	90	136.9	98	231	105
16	---	---	---	---	---	---	---	---	93.9	92	144.5	99	231	105
18	---	---	---	---	---	---	---	---	102.8	95	160.9	100	246	105
20	---	---	---	---	---	---	---	---	107.5	95	169.1	100	261	105

SINTERED BRONZE MUFFLER



Part #	NPT M	Body	OAL	Hex	List Price	QTY	Pkg Price
PCSBM-01	10-32 UNF	BRASS	3/4"	5/16"	\$ 1.25	5	\$ 6.25
PCSBM-02	1/8"	BRASS	29/32"	7/16"	\$ 1.48	5	\$ 7.38
PCSBM-04	1/4"	BRASS	1-5/16"	9/16"	\$ 2.46	5	\$ 12.31
PCSBM-06	3/8"	BRASS	1-17/32"	11/16"	\$ 4.46	5	\$ 22.31
PCSBM-08	1/2"	BRASS	1-57/64"	7/8"	\$ 6.93	5	\$ 34.63
PCSBM-12	3/4"	BRASS	2-9/32"	1-9/64"	\$ 13.50	1	\$ 13.50
PCSBM-16	1"	BRASS	2-57/64"	1-11/32"	\$ 21.38	1	\$ 21.38

Features and Specifications for Sintered Bronze Muffler Zinc Steel

The Sintered Bronze Exhaust Muffler utilizes a porous filter element secured to a standard pip fitting. These compact and inexpensive mufflers are easy to install and maintain. They are used to diffuse air and muffle noise from the exhaust ports of air valves, air cylinders and air tools to an acceptable level within OSHA noise requirements.

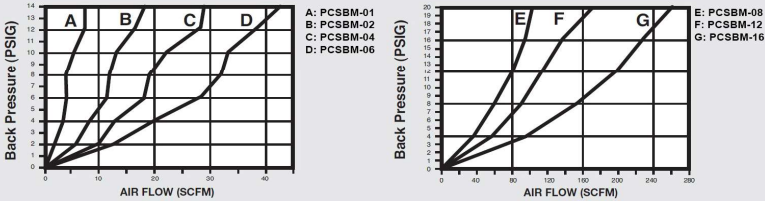
These can also be used as filters for gasoline, oil, air exhaust, intake filtering, coalescing of oil mist or water vapor, among other applications.

Unit should be mounted in a protective position free from excessive vibration. Use wrench on hex head to tighten unit to the device.

SPECIFICATIONS

TEMPERATURE RANGE	MAX OPERATON PRESSURE	ELEMENT MATERIAL
35°F - 300°F (1.6°C - 149°C)	300 PSI (21.1 kg/cm ²)	Sintered Bronze 40 µm

FLOW CHARACTERISTICS - PNEUMATIC EXHAUST MUFFLER



SOUND CHARACTERISTICS - PNEUMATIC EXHAUST MUFFLER

BACK PRESSURE (PSIG)	PCSBM-01		PCSBM-02		PCSBM-04		PCSBM-06		PCSBM-08		PCSBM-12		PCSBM-16	
	FLOW (SCFM)	db	FLOW (SCFM)	db	FLOW (SCFM)	db	FLOW (SCFM)	db	FLOW (SCFM)	db	FLOW (SCFM)	db	FLOW (SCFM)	db
2	1.1	72	7	72	10	73	12	74	26.6	75	39.4	76	67	93
4	2.3	72	9	73	12	74	20	74	39.5	76	62.0	80	104	95
6	3.6	72	11	73	17	74	26	74	49.9	77	80.7	88	134	97
8	5.0	73	12	73	19	74	31	75	60.9	80	97.0	93	154	100
10	5.2	73	13	74	23	75	35	76	71.3	86	110.2	96	181	101
12	7.4	74	15	74	23	75	39	76	79.5	87	121.3	97	210	102
14	8.0	74	17	75	29	76	43	77	86.6	90	136.9	98	231	105
16	---	---	---	---	---	---	---	---	93.9	92	144.5	99	231	105
18	---	---	---	---	---	---	---	---	102.8	95	160.9	100	246	105
20	---	---	---	---	---	---	---	---	107.5	95	169.1	100	261	105

SINTERED BRONZE MUFFLER ZINC STEEL



Part #	NPT M	Body	OAL	Hex	List Price	QTY	Pkg Price
PCSBM-06-ZS	3/8"	ZINC STEEL	1-17/32"	11/16"	\$ 3.13	5	\$ 15.63
PCSBM-08-ZS	1/2"	ZINC STEEL	1-57/64"	7/8"	\$ 4.41	5	\$ 22.06
PCSBM-12-ZS	3/4"	ZINC STEEL	2-9/32"	1-9/64"	\$ 7.70	1	\$ 7.70
PCSBM-16-ZS	1"	ZINC STEEL	2-57/64"	1-11/32"	\$ 12.59	1	\$ 12.59
PCSBM-20-ZS	1-1/4"	ZINC STEEL	3-15/32"	1-3/4"	\$ 24.01	1	\$ 24.01
PCSBM-24-ZS	1-1/2"	ZINC STEEL	4"	1-31/32"	\$ 32.59	1	\$ 32.59

Features and Specifications for Speed Control Muffler

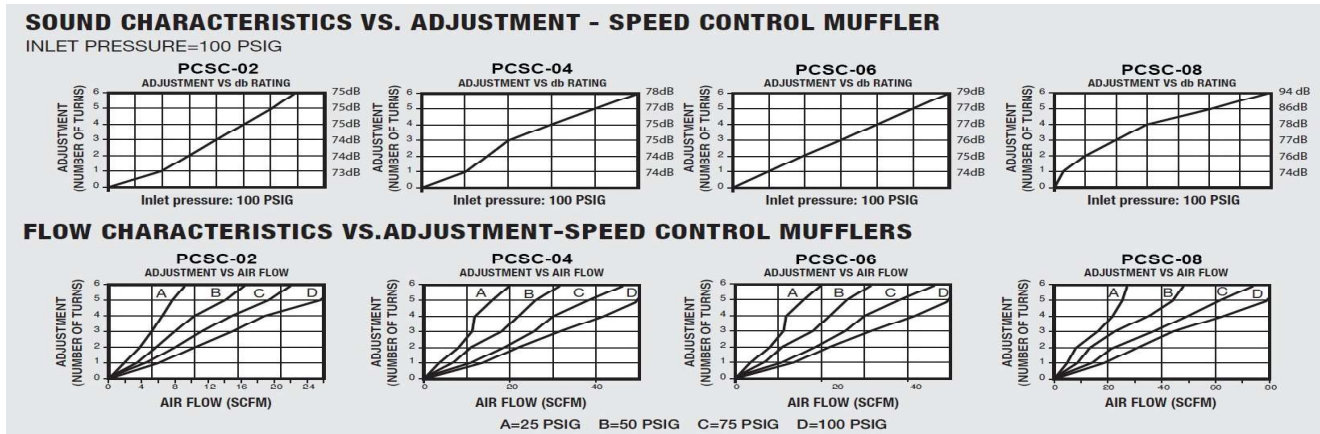
The Speed Control Muffler provides infinite variations to control air flow at an acceptable sound level on exhaust ports of air valves.

The external adjustment screw is used to open or close the muffler to your exact needs. When the correct position is selected the provided lock nut will lock that position in place. Additional exhaust air noise is eliminated by the surrounding sleeve of sintered bronze.

Unit should be mounted in a protective position free from excessive vibration. Use wrench on hex head to tighten unit to the device.

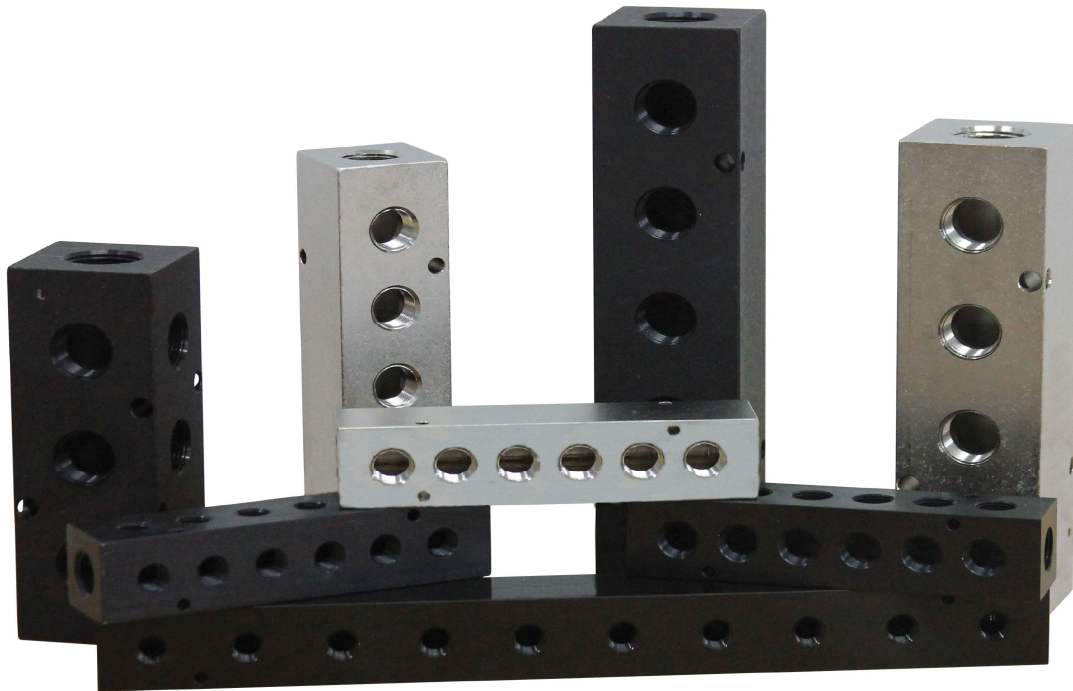
SPECIFICATIONS

TEMPERATURE RANGE	MAX OPERATON PRESSURE	ELEMENT MATERIAL
35°F - 300°F (1.6°C - 149°C)	300 PSI (21.1 kg/cm ²)	Sintered Bronze 40 μm



Part #	NPT M	Body	OAL	Hex	List Price	QTY	Pkg Price
PCSC-02	1/8"	BRASS	1-1/2"	1/2"	\$ 4.39	5	\$ 21.94
PCSC-04	1/4"	BRASS	1-11/16"	9/16"	\$ 5.49	5	\$ 27.44
PCSC-06	3/8"	BRASS	1-11/16"	11/16"	\$ 6.13	5	\$ 30.63
PCSC-08	1/2"	BRASS	2"	7/8"	\$ 10.15	5	\$ 50.75
PCSC-12	3/4"	BRASS	2-3/4"	1-7/64"	\$ 16.74	1	\$ 16.74
PCSC-16	1"	BRASS	3"	1-11/32"	\$ 22.93	1	\$ 22.93

Now that you have your Muffler's & Breather's, don't forget your manifolds!



Polyconn Tubing:
Polyurethane, Nylon,
Polyethylene and many
more materials to choose
from!

Push to Connect Fittings:
Composite
NSF Acetal Plastic
Nickel Plated Brass
Stainless Steel
D.O.T. Brass
D.O.T Composite

Polyconn[®] the one-stop shop for your
pneumatic needs.