

# POLY<sup>®</sup> CONN

Servicing Your Pneumatic Needs For Over 40 Years

## MANIFOLDS

### EMAIL

[insidesales@polyconn.com](mailto:insidesales@polyconn.com)

### WEBSITE

[www.polyconn.com](http://www.polyconn.com)

### QUESTIONS

(763) 559-0388



# Features and Specifications for Manifolds

Polyconn manifolds provide a convenient junction point for the distribution of gasses or fluids. Simply thread fittings into the ports to produce an organized method of supplying multiple lines from a single source. Our aluminum manifolds go through a controlled oxidation process called anodizing which produces a non-conductive coating that provides corrosion and wear resistance.

## SPECIFICATIONS

OPERATING PRESSURE PSI	TEMPERATURE RANGE	CORROSION RESISTANCE
1,000 PSI Non-Shock Air 3,000 PSI Non-Shock Hydraulic	-10°F to 200°F	Air and liquids compatible with materials of construction

## FEATURES

- Aluminum with Black Anodizing or Nickel Plating for corrosion resistance.
- Other Materials Available for Custom Manifolds: Brass, Stainless Steel, Nylon and Polypropylene.
- Standard Outlets: 2 to 10 inline.
- Thread Outlet Sizes: 1/16", 1/8", 1/4", 3/8", 1/2", and 3/4" NPT Female

## USES

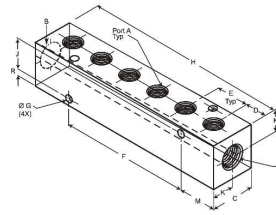
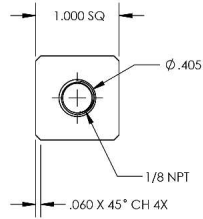
- Air
- Water
- Hydraulic Oils

## ORDERING INFORMATION

- Contact us with your custom manifold requirements: Material, Outlets, Outlet thread size, Inlet thread size, Length (if specific size is required), Outlet spacing (1", 1.5" from center to center, or custom size), Quantity.
- Polyconn will work with you to create your custom manifold to your required specifications
- All dimensions are subject to change without notice.
- Polyconn can supply BSPT, BSPP or SAE threads as well.

## BLACK ANODIZED MANIFOLD

1/16 OUTLET X 1/8 INLET

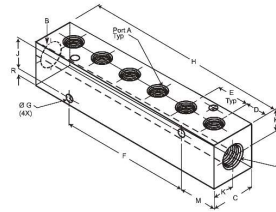
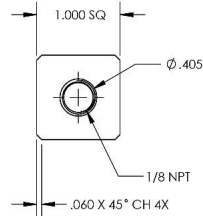


### INLINE

Part #	Outlets	A	B	C	D	E	F	G	H	J	K	M	R	QTY	List Price
PC000-02-1/16	2	1/16	1/8	1.00	0.50	0.75	N/A	.170	1.75	0.70	0.50	0.875	0.15	1	\$ 12.93
PC000-03-1/16	3	1/16	1/8	1.00	0.50	0.75	0.75	.170	2.50	0.70	0.50	0.875	0.15	1	\$ 21.43
PC000-04-1/16	4	1/16	1/8	1.00	0.50	0.75	1.50	.170	3.25	0.70	0.50	0.875	0.15	1	\$ 16.98
PC000-06-1/16	6	1/16	1/8	1.00	0.50	0.75	3.00	.170	4.75	0.70	0.50	0.875	0.15	1	\$ 20.00

## BLACK ANODIZED MANIFOLD

1/16 OUTLET X 1/8 INLET



### INLINE

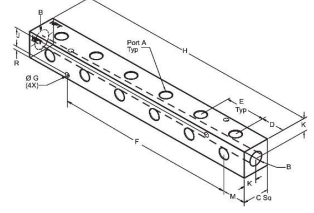
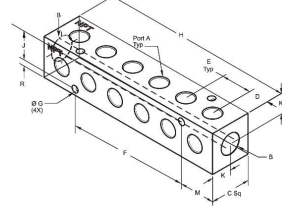
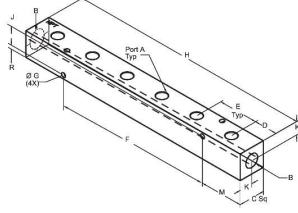
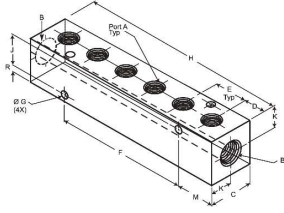
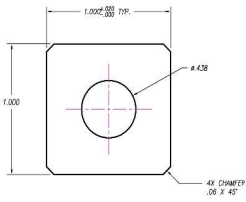
Part #	Outlets	A	B	C	D	E	F	G	H	J	K	M	R	QTY	List Price
PC000-02-1/16NP	2	1/16	1/8	1.00	0.50	0.75	N/A	.170	1.75	0.70	0.50	0.875	0.15	1	\$ 26.55
PC000-03-1/16NP	3	1/16	1/8	1.00	0.50	0.75	0.75	.170	2.50	0.70	0.50	0.875	0.15	1	\$ 29.40
PC000-04-1/16NP	4	1/16	1/8	1.00	0.50	0.75	1.50	.170	3.25	0.70	0.50	0.875	0.15	1	\$ 21.24
PC000-06-1/16NP	6	1/16	1/8	1.00	0.50	0.75	3.00	.170	4.75	0.70	0.50	0.875	0.15	1	\$ 34.86

# POLYCONN®

Servicing Your Pneumatic Needs For Over 40 Years

# BLACK ANODIZED MANIFOLD

1/8 OUTLET X 1/4 INLET



## INLINE

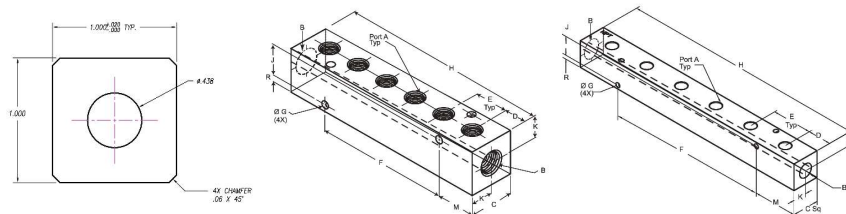
Part #	Outlets	A	B	C	D	E	F	G	H	J	K	M	R	QTY	List Price
PCM10-125-02B	2	1/8	1/4	1.00	0.50	0.75	N/A	0.17	1.75	0.70	0.50	0.88	0.15	1	\$ 8.83
PCM10-125-02BW	2	1/8	1/4	1.00	0.88	1.50	N/A	0.17	3.25	0.70	0.50	1.63	0.15	1	\$ 10.19
PCM10-125-03B	3	1/8	1/4	1.00	0.50	0.75	0.75	0.17	2.50	0.70	0.50	0.88	0.15	1	\$ 9.95
PCM10-125-03BW	3	1/8	1/4	1.00	0.88	1.50	1.50	0.17	4.75	0.70	0.50	1.63	0.15	1	\$ 12.00
PCM10-125-04B	4	1/8	1/4	1.00	0.50	0.75	1.50	0.17	3.25	0.70	0.50	0.88	0.15	1	\$ 11.07
PCM10-125-04BW	4	1/8	1/4	1.00	0.88	1.50	3.00	0.17	6.25	0.70	0.50	1.63	0.15	1	\$ 13.79
PCM10-125-05B	5	1/8	1/4	1.00	0.50	0.75	2.25	0.17	4.00	0.70	0.50	0.88	0.15	1	\$ 12.19
PCM10-125-05BW	5	1/8	1/4	1.00	0.88	1.50	4.50	0.17	7.75	0.70	0.50	1.63	0.15	1	\$ 15.60
PCM10-125-06B	6	1/8	1/4	1.00	0.50	0.75	3.00	0.17	4.75	0.70	0.50	0.88	0.15	1	\$ 13.31
PCM10-125-06BW	6	1/8	1/4	1.00	0.88	1.50	6.00	0.17	9.25	0.70	0.50	1.63	0.15	1	\$ 17.40
PCM10-125-07B	7	1/8	1/4	1.00	0.50	0.75	3.75	0.17	5.50	0.70	0.50	0.88	0.15	1	\$ 14.40
PCM10-125-07BW	7	1/8	1/4	1.00	0.88	1.50	7.50	0.17	10.75	0.70	0.50	1.63	0.15	1	\$ 31.10
PCM10-125-08B	8	1/8	1/4	1.00	0.50	0.75	4.50	0.17	6.25	0.70	0.50	0.88	0.15	1	\$ 15.52
PCM10-125-08BW	8	1/8	1/4	1.00	0.88	1.50	9.00	0.17	12.25	0.70	0.50	1.63	0.15	1	\$ 21.00
PCM10-125-09B	9	1/8	1/4	1.00	0.50	0.75	5.25	0.17	7.00	0.70	0.50	0.88	0.15	1	\$ 16.64
PCM10-125-09BW	9	1/8	1/4	1.00	0.88	1.50	10.50	0.17	13.75	0.70	0.50	1.63	0.15	1	\$ 34.69
PCM10-125-10B	10	1/8	1/4	1.00	0.50	0.75	6.00	0.17	7.75	0.70	0.50	0.88	0.15	1	\$ 17.76
PCM10-125-10BW	10	1/8	1/4	1.00	0.88	1.50	12.00	0.17	15.25	0.70	0.50	1.63	0.15	1	\$ 36.50

## RIGHT ANGLE

Part #	Outlets	A	B	C	D	E	F	G	H	J	K	M	R	QTY	List Price
PCM10-125R-02B	4	1/8	1/4	1.00	0.50	0.75	N/A	0.17	1.75	0.70	0.50	0.88	0.15	1	\$ 12.55
PCM10-125R-02BW	4	1/8	1/4	1.00	0.88	1.50	N/A	0.17	3.25	0.70	0.50	1.63	0.15	1	\$ 25.83
PCM10-125R-03B	6	1/8	1/4	1.00	0.50	0.75	0.75	0.17	2.50	0.70	0.50	0.88	0.15	1	\$ 13.67
PCM10-125R-03BW	6	1/8	1/4	1.00	0.88	1.50	1.50	0.17	4.75	0.70	0.50	1.63	0.15	1	\$ 27.62
PCM10-125R-04B	8	1/8	1/4	1.00	0.50	0.75	1.50	0.17	3.25	0.70	0.50	0.88	0.15	1	\$ 15.64
PCM10-125R-04BW	8	1/8	1/4	1.00	0.88	1.50	3.00	0.17	6.25	0.70	0.50	1.63	0.15	1	\$ 18.38
PCM10-125R-05B	10	1/8	1/4	1.00	0.50	0.75	2.25	0.17	4.00	0.70	0.50	0.88	0.15	1	\$ 18.38
PCM10-125R-05BW	10	1/8	1/4	1.00	0.88	1.50	4.50	0.17	7.75	0.70	0.50	1.63	0.15	1	\$ 27.74
PCM10-125R-06B	12	1/8	1/4	1.00	0.50	0.75	3.00	0.17	4.75	0.70	0.50	0.88	0.15	1	\$ 20.74
PCM10-125R-06BW	12	1/8	1/4	1.00	0.88	1.50	6.00	0.17	9.25	0.70	0.50	1.63	0.15	1	\$ 24.83
PCM10-125R-07B	14	1/8	1/4	1.00	0.50	0.75	3.75	0.17	5.50	0.70	0.50	0.88	0.15	1	\$ 26.88
PCM10-125R-07BW	14	1/8	1/4	1.00	0.88	1.50	7.50	0.17	10.75	0.70	0.50	1.63	0.15	1	\$ 37.62
PCM10-125R-08B	16	1/8	1/4	1.00	0.50	0.75	4.50	0.17	6.25	0.70	0.50	0.88	0.15	1	\$ 28.93
PCM10-125R-08BW	16	1/8	1/4	1.00	0.88	1.50	9.00	0.17	12.25	0.70	0.50	1.63	0.15	1	\$ 40.33
PCM10-125R-09B	18	1/8	1/4	1.00	0.50	0.75	5.25	0.17	7.00	0.70	0.50	0.88	0.15	1	\$ 35.07
PCM10-125R-09BW	18	1/8	1/4	1.00	0.88	1.50	10.50	0.17	13.75	0.70	0.50	1.63	0.15	1	\$ 41.21
PCM10-125R-10B	20	1/8	1/4	1.00	0.50	0.75	6.00	0.17	7.75	0.70	0.50	0.88	0.15	1	\$ 27.07
PCM10-125R-10BW	20	1/8	1/4	1.00	0.88	1.50	12.00	0.17	15.25	0.70	0.50	1.63	0.15	1	\$ 45.81

# NICKEL PLATED MANIFOLD

1/8 OUTLET X 1/4 INLET



## INLINE

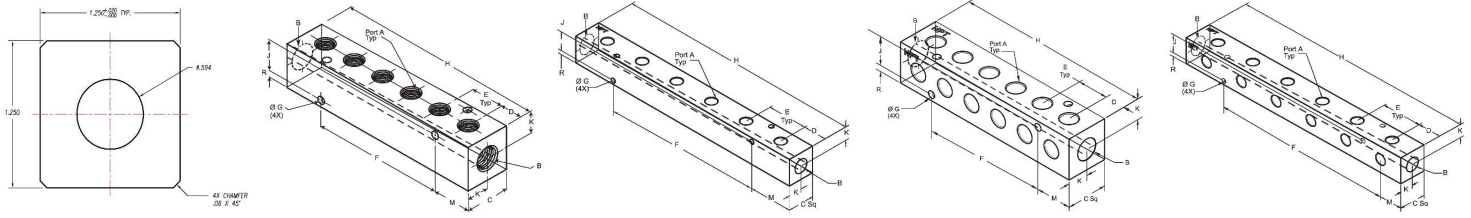
Part #	Outlets	A	B	C	D	E	F	G	H	J	K	M	R	QTY	List Price
PCM10-125-02NP	2	1/8	1/4	1.00	0.50	0.75	N/A	0.17	1.75	0.70	0.50	0.88	0.15	1	\$ 22.36
PCM10-125-02NPW	2	1/8	1/4	1.00	0.88	1.50	N/A	0.17	3.25	0.70	0.50	1.63	0.15	1	\$ 24.29
PCM10-125-03NP	3	1/8	1/4	1.00	0.50	0.75	0.75	0.17	2.50	0.70	0.50	0.88	0.15	1	\$ 23.76
PCM10-125-03NPW	3	1/8	1/4	1.00	0.88	1.50	1.50	0.17	4.75	0.70	0.50	1.63	0.15	1	\$ 26.67
PCM10-125-04NP	4	1/8	1/4	1.00	0.50	0.75	1.50	0.17	3.25	0.70	0.50	0.88	0.15	1	\$ 25.17
PCM10-125-04NPW	4	1/8	1/4	1.00	0.88	1.50	3.00	0.17	6.25	0.70	0.50	1.63	0.15	1	\$ 29.00
PCM10-125-05NP	5	1/8	1/4	1.00	0.50	0.75	2.25	0.17	4.00	0.70	0.50	0.88	0.15	1	\$ 26.57
PCM10-125-05NPW	5	1/8	1/4	1.00	0.88	1.50	4.50	0.17	7.75	0.70	0.50	1.63	0.15	1	\$ 31.38
PCM10-125-06NP	6	1/8	1/4	1.00	0.50	0.75	3.00	0.17	4.75	0.70	0.50	0.88	0.15	1	\$ 27.95
PCM10-125-06NPW	6	1/8	1/4	1.00	0.88	1.50	6.00	0.17	9.25	0.70	0.50	1.63	0.15	1	\$ 33.74
PCM10-125-07NP	7	1/8	1/4	1.00	0.50	0.75	3.75	0.17	5.50	0.70	0.50	0.88	0.15	1	\$ 29.36
PCM10-125-08NPW	8	1/8	1/4	1.00	0.88	1.50	9.00	0.17	12.25	0.70	0.50	1.63	0.15	1	\$ 30.76
PCM10-125-08NP	8	1/8	1/4	1.00	0.50	0.75	4.50	0.17	6.25	0.70	0.50	0.88	0.15	1	\$ 38.48
PCM10-125-09NP	9	1/8	1/4	1.00	0.50	0.75	5.25	0.17	7.00	0.70	0.50	0.88	0.15	1	\$ 32.17
PCM10-125-10NP	10	1/8	1/4	1.00	0.50	0.75	6.00	0.17	7.75	0.70	0.50	0.88	0.15	1	\$ 33.55

# POLYCONN<sup>®</sup>

Servicing Your Pneumatic Needs For Over 40 Years

# BLACK ANODIZED MANIFOLD

1/8 OUTLET X 3/8 INLET



## INLINE

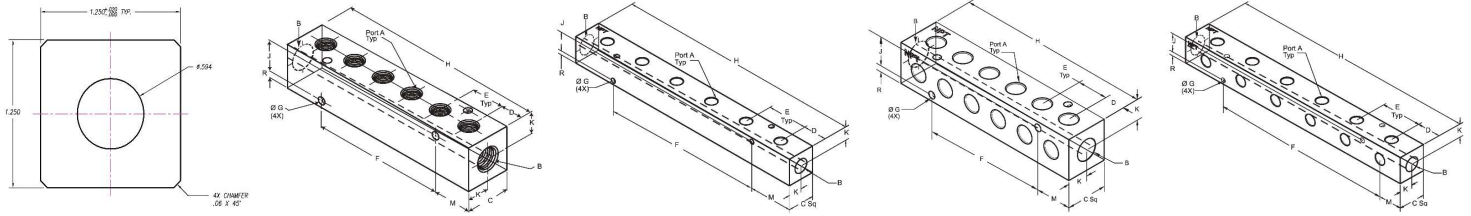
Part #	Outlets	A	B	C	D	E	F	G	H	J	K	M	R	QTY	List Price
PCM20-125-02B	2	1/8	3/8	1.25	0.50	0.75	N/A	0.20	1.75	0.89	0.63	0.88	0.18	1	\$ 22.12
PCM20-125-02BW	2	1/8	3/8	1.25	0.88	1.50	N/A	0.20	3.25	0.89	0.63	1.63	0.18	1	\$ 24.10
PCM20-125-03B	3	1/8	3/8	1.25	0.50	0.75	0.75	0.20	2.50	0.89	0.63	0.88	0.18	1	\$ 23.52
PCM20-125-03BW	3	1/8	3/8	1.25	0.88	1.50	1.50	0.20	4.75	0.89	0.63	1.63	0.18	1	\$ 26.50
PCM20-125-04B	4	1/8	3/8	1.25	0.50	0.75	1.50	0.20	3.25	0.89	0.63	0.88	0.18	1	\$ 24.95
PCM20-125-04BW	4	1/8	3/8	1.25	0.88	1.50	3.00	0.20	6.25	0.89	0.63	1.63	0.18	1	\$ 28.90
PCM20-125-05B	5	1/8	3/8	1.25	0.50	0.75	3.00	0.20	4.00	0.89	0.63	0.88	0.18	1	\$ 26.38
PCM20-125-05BW	5	1/8	3/8	1.25	0.88	1.50	4.50	0.20	7.75	0.89	0.63	1.63	0.18	1	\$ 31.31
PCM20-125-06B	6	1/8	3/8	1.25	0.50	0.75	3.00	0.20	4.75	0.89	0.63	0.88	0.18	1	\$ 27.79
PCM20-125-06BW	6	1/8	3/8	1.25	0.88	1.50	6.00	0.20	9.25	0.89	0.63	1.63	0.18	1	\$ 33.71
PCM20-125-07B	7	1/8	3/8	1.25	0.50	0.75	3.00	0.20	5.50	0.89	0.63	0.88	0.18	1	\$ 29.21
PCM20-125-07BW	7	1/8	3/8	1.25	0.88	1.50	7.50	0.20	10.75	0.89	0.63	1.63	0.18	1	\$ 36.12
PCM20-125-08B	8	1/8	3/8	1.25	0.50	0.75	4.50	0.20	6.25	0.89	0.63	0.88	0.18	1	\$ 30.64
PCM20-125-08BW	8	1/8	3/8	1.25	0.88	1.50	9.00	0.20	12.25	0.89	0.63	1.63	0.18	1	\$ 38.52
PCM20-125-09B	9	1/8	3/8	1.25	0.50	0.75	3.00	0.20	7.00	0.89	0.63	0.88	0.18	1	\$ 32.05
PCM20-125-09BW	9	1/8	3/8	1.25	0.88	1.50	10.50	0.20	13.75	0.89	0.63	1.63	0.18	1	\$ 40.93
PCM20-125-10B	10	1/8	3/8	1.25	0.50	0.75	6.00	0.20	7.75	0.89	0.63	0.88	0.18	1	\$ 33.48
PCM20-125-10BW	10	1/8	3/8	1.25	0.88	1.50	12.00	0.20	15.25	0.89	0.63	1.63	0.18	1	\$ 43.36

## RIGHT ANGLE

Part #	Outlets	A	B	C	D	E	F	G	H	J	K	M	R	QTY	List Price
PCM20-125R-02B	4	1/8	3/8	1.25	0.50	0.75	N/A	0.20	1.75	0.89	0.63	0.88	0.18	1	\$ 25.83
PCM20-125R-02BW	4	1/8	3/8	1.25	0.88	1.50	N/A	0.20	3.25	0.89	0.63	1.63	0.18	1	\$ 27.81
PCM20-125R-03B	6	1/8	3/8	1.25	0.50	0.75	0.75	0.20	2.50	0.89	0.63	0.88	0.18	1	\$ 27.45
PCM20-125R-03BW	6	1/8	3/8	1.25	0.88	1.50	1.50	0.20	4.75	0.89	0.63	1.63	0.18	1	\$ 30.40
PCM20-125R-04B	8	1/8	3/8	1.25	0.50	0.75	1.50	0.20	3.25	0.89	0.63	0.88	0.18	1	\$ 28.67
PCM20-125R-04BW	8	1/8	3/8	1.25	0.88	1.50	3.00	0.20	6.25	0.89	0.63	1.63	0.18	1	\$ 32.62
PCM20-125R-05B	10	1/8	3/8	1.25	0.50	0.75	2.25	0.20	4.00	0.89	0.63	0.88	0.18	1	\$ 31.02
PCM20-125R-05BW	10	1/8	3/8	1.25	0.88	1.50	4.50	0.20	7.75	0.89	0.63	1.63	0.18	1	\$ 35.95
PCM20-125R-06B	12	1/8	3/8	1.25	0.50	0.75	3.00	0.20	4.75	0.89	0.63	0.88	0.18	1	\$ 33.38
PCM20-125R-06BW	12	1/8	3/8	1.25	0.88	1.50	6.00	0.20	9.25	0.89	0.63	1.63	0.18	1	\$ 39.29
PCM20-125R-07B	14	1/8	3/8	1.25	0.50	0.75	3.75	0.20	5.50	0.89	0.63	0.88	0.18	1	\$ 35.74
PCM20-125R-07BW	14	1/8	3/8	1.25	0.88	1.50	7.50	0.20	10.75	0.89	0.63	1.63	0.18	1	\$ 42.64
PCM20-125R-08B	16	1/8	3/8	1.25	0.50	0.75	4.50	0.20	6.25	0.89	0.63	0.88	0.18	1	\$ 38.07
PCM20-125R-08BW	16	1/8	3/8	1.25	0.88	1.50	9.00	0.20	12.25	0.89	0.63	1.63	0.18	1	\$ 45.98
PCM20-125R-09B	18	1/8	3/8	1.25	0.50	0.75	5.25	0.20	7.00	0.89	0.63	0.88	0.18	1	\$ 40.43
PCM20-125R-09BW	18	1/8	3/8	1.25	0.88	1.50	10.50	0.20	13.75	0.89	0.63	1.63	0.18	1	\$ 49.31
PCM20-125R-10B	20	1/8	3/8	1.25	0.50	0.75	6.00	0.20	7.75	0.89	0.63	0.88	0.18	1	\$ 42.79
PCM20-125R-10BW	20	1/8	3/8	1.25	0.88	1.50	12.00	0.20	15.25	0.89	0.63	1.63	0.18	1	\$ 52.64

# BLACK ANODIZED MANIFOLD

1/4 OUTLET X 3/8 INLET



## INLINE

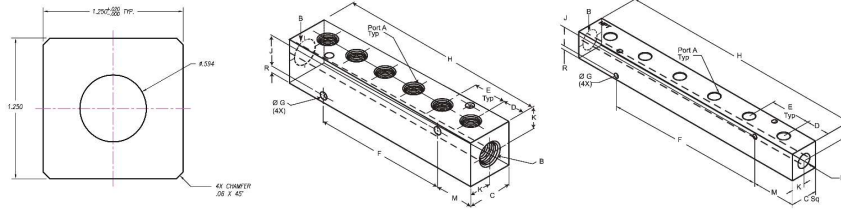
Part #	Outlets	A	B	C	D	E	F	G	H	J	K	M	R	QTY	List Price
PCM20-250-02B	2	1/4	3/8	1.25	0.63	0.88	N/A	0.20	2.13	0.89	0.63	1.06	0.18	1	\$ 10.71
PCM20-250-02BW	2	1/4	3/8	1.25	0.88	1.50	N/A	0.20	3.25	0.89	0.63	1.63	0.18	1	\$ 12.19
PCM20-250-03B	3	1/4	3/8	1.25	0.63	0.88	0.88	0.20	3.00	0.89	0.63	1.06	0.18	1	\$ 12.29
PCM20-250-03BW	3	1/4	3/8	1.25	0.88	1.50	1.50	0.20	4.75	0.89	0.63	1.63	0.18	1	\$ 14.60
PCM20-250-04B	4	1/4	3/8	1.25	0.63	0.88	1.75	0.20	3.88	0.89	0.63	1.06	0.18	1	\$ 13.88
PCM20-250-04BW	4	1/4	3/8	1.25	0.88	1.50	3.00	0.20	6.25	0.89	0.63	1.63	0.18	1	\$ 17.00
PCM20-250-05B	5	1/4	3/8	1.25	0.63	0.88	2.63	0.20	4.75	0.89	0.63	1.06	0.18	1	\$ 15.45
PCM20-250-05BW	5	1/4	3/8	1.25	0.88	1.50	4.50	0.20	7.75	0.89	0.63	1.63	0.18	1	\$ 19.40
PCM20-250-06B	6	1/4	3/8	1.25	0.63	0.88	3.50	0.20	5.63	0.89	0.63	1.06	0.18	1	\$ 17.05
PCM20-250-06BW	6	1/4	3/8	1.25	0.88	1.50	6.00	0.20	9.25	0.89	0.63	1.63	0.18	1	\$ 21.81
PCM20-250-07B	7	1/4	3/8	1.25	0.63	0.88	4.38	0.20	6.50	0.89	0.63	1.06	0.18	1	\$ 18.62
PCM20-250-07BW	7	1/4	3/8	1.25	0.88	1.50	7.50	0.20	10.75	0.89	0.63	1.63	0.18	1	\$ 36.12
PCM20-250-08B	8	1/4	3/8	1.25	0.63	0.88	5.25	0.20	7.38	0.89	0.63	1.06	0.18	1	\$ 20.21
PCM20-250-08BW	8	1/4	3/8	1.25	0.88	1.50	9.00	0.20	12.25	0.89	0.63	1.63	0.18	1	\$ 26.62
PCM20-250-09B	9	1/4	3/8	1.25	0.63	0.88	6.13	0.20	8.25	0.89	0.63	1.06	0.18	1	\$ 21.81
PCM20-250-09BW	9	1/4	3/8	1.25	0.88	1.50	10.50	0.20	13.75	0.89	0.63	1.63	0.18	1	\$ 40.93
PCM20-250-10B	10	1/4	3/8	1.25	0.63	0.88	7.00	0.20	9.13	0.89	0.63	1.06	0.18	1	\$ 23.38
PCM20-250-10BW	10	1/4	3/8	1.25	0.88	1.50	12.00	0.20	15.25	0.89	0.63	1.63	0.18	1	\$ 31.45

## RIGHT ANGLE

Part #	Outlets	A	B	C	D	E	F	G	H	J	K	M	R	QTY	List Price
PCM20-250R-02B	4	1/4	3/8	1.25	0.63	0.88	N/A	0.20	2.13	0.89	0.63	1.06	0.18	1	\$ 14.43
PCM20-250R-02BW	4	1/4	3/8	1.25	0.88	1.50	N/A	0.20	3.25	0.89	0.63	1.63	0.18	1	\$ 27.81
PCM20-250R-03B	6	1/4	3/8	1.25	0.63	0.88	0.87	0.20	3.00	0.89	0.63	1.06	0.18	1	\$ 15.07
PCM20-250R-03BW	6	1/4	3/8	1.25	0.88	1.50	1.50	0.20	4.75	0.89	0.63	1.63	0.18	1	\$ 29.29
PCM20-250R-04B	8	1/4	3/8	1.25	0.63	0.88	1.75	0.20	3.88	0.89	0.63	1.06	0.18	1	\$ 17.60
PCM20-250R-04BW	8	1/4	3/8	1.25	0.88	1.50	3.00	0.20	6.25	0.89	0.63	1.63	0.18	1	\$ 20.71
PCM20-250R-05B	10	1/4	3/8	1.25	0.63	0.88	2.62	0.20	4.75	0.89	0.63	1.06	0.18	1	\$ 20.12
PCM20-250R-05BW	10	1/4	3/8	1.25	0.88	1.50	4.50	0.20	7.75	0.89	0.63	1.63	0.18	1	\$ 24.05
PCM20-250R-06B	12	1/4	3/8	1.25	0.63	0.88	3.50	0.20	5.63	0.89	0.63	1.06	0.18	1	\$ 22.62
PCM20-250R-06BW	12	1/4	3/8	1.25	0.88	1.50	6.00	0.20	9.25	0.89	0.63	1.63	0.18	1	\$ 27.38
PCM20-250R-07B	14	1/4	3/8	1.25	0.63	0.88	4.37	0.20	6.50	0.89	0.63	1.06	0.18	1	\$ 31.10
PCM20-250R-07BW	14	1/4	3/8	1.25	0.88	1.50	7.50	0.20	10.75	0.89	0.63	1.63	0.18	1	\$ 42.64
PCM20-250R-08B	16	1/4	3/8	1.25	0.63	0.88	5.25	0.20	7.38	0.89	0.63	1.06	0.18	1	\$ 27.67
PCM20-250R-08BW	16	1/4	3/8	1.25	0.88	1.50	9.00	0.20	12.25	0.89	0.63	1.63	0.18	1	\$ 45.98
PCM20-250R-09B	18	1/4	3/8	1.25	0.63	0.88	6.12	0.20	8.25	0.89	0.63	1.06	0.18	1	\$ 42.07
PCM20-250R-09BW	18	1/4	3/8	1.25	0.88	1.50	10.50	0.20	13.75	0.89	0.63	1.63	0.18	1	\$ 49.31
PCM20-250R-10B	20	1/4	3/8	1.25	0.63	0.88	7.00	0.20	9.13	0.89	0.63	1.06	0.18	1	\$ 38.64
PCM20-250R-10BW	20	1/4	3/8	1.25	0.88	1.50	10.50	0.20	13.75	0.89	0.63	1.63	0.18	1	\$ 52.64

# NICKEL PLATED MANIFOLD

1/4 OUTLET X 3/8 INLET

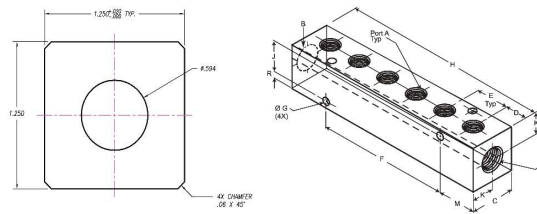


## INLINE

Part #	Outlets	A	B	C	D	E	F	G	H	J	K	M	R	QTY	List Price
PCM20-250-02NP	2	1/4	3/8	1.25	0.63	0.88	N/A	0.20	2.13	0.89	0.63	1.06	0.18	1	\$ 24.76
PCM20-250-02NPW	2	1/4	3/8	1.25	0.88	1.50	N/A	0.20	3.25	0.89	0.63	1.63	0.18	1	\$ 26.86
PCM20-250-03NP	3	1/4	3/8	1.25	0.63	0.88	0.88	0.20	3.00	0.89	0.63	1.06	0.18	1	\$ 26.81
PCM20-250-03NPW	3	1/4	3/8	1.25	0.88	1.50	1.50	0.20	4.75	0.89	0.63	1.63	0.18	1	\$ 30.07
PCM20-250-04NP	4	1/4	3/8	1.25	0.63	0.88	1.75	0.20	3.88	0.89	0.63	1.06	0.18	1	\$ 28.88
PCM20-250-04NPW	4	1/4	3/8	1.25	0.88	1.50	3.00	0.20	6.25	0.89	0.63	1.63	0.18	1	\$ 33.29
PCM20-250-05NP	5	1/4	3/8	1.25	0.63	0.88	2.63	0.20	4.75	0.89	0.63	1.06	0.18	1	\$ 30.93
PCM20-250-05NPW	5	1/4	3/8	1.25	0.88	1.50	4.50	0.20	7.75	0.89	0.63	1.63	0.18	1	\$ 36.50
PCM20-250-06NP	6	1/4	3/8	1.25	0.63	0.88	3.50	0.20	5.63	0.89	0.63	1.06	0.18	1	\$ 33.00
PCM20-250-06NPW	6	1/4	3/8	1.25	0.88	1.50	6.00	0.20	9.25	0.89	0.63	1.63	0.18	1	\$ 39.71
PCM20-250-07NP	7	1/4	3/8	1.25	0.63	0.88	4.38	0.20	6.50	0.89	0.63	1.06	0.18	1	\$ 35.05
PCM20-250-08NPW	8	1/4	3/8	1.25	0.88	1.50	9.00	0.20	12.25	0.89	0.63	1.63	0.18	1	\$ 37.12
PCM20-250-08NP	8	1/4	3/8	1.25	0.63	0.88	5.25	0.20	7.38	0.89	0.63	1.06	0.18	1	\$ 46.17
PCM20-250-09NP	9	1/4	3/8	1.25	0.63	0.88	6.13	0.20	8.25	0.89	0.63	1.06	0.18	1	\$ 39.17
PCM20-250-10NPW	10	1/4	3/8	1.25	0.88	1.50	12.00	0.20	15.25	0.89	0.63	1.63	0.18	1	\$ 41.24
PCM20-250-10NP	10	1/4	3/8	1.25	0.63	0.88	7.00	0.20	9.13	0.89	0.63	1.06	0.18	1	\$ 52.60

# BLACK ANODIZED MANIFOLD

3/8 OUTLET X 3/8 INLET



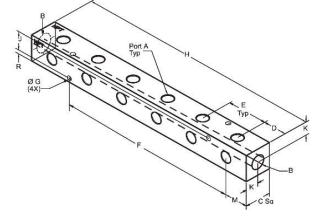
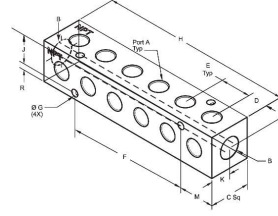
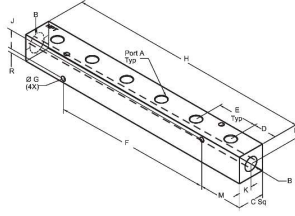
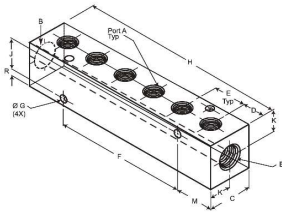
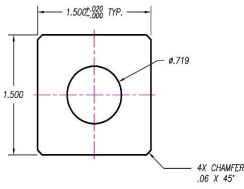
## INLINE

Part #	Outlets	A	B	C	D	E	F	G	H	J	K	M	R	QTY	List Price
PCM20-375-02B	2	3/8	3/8	1.25	1.00	1.13	N/A	0.20	3.13	0.89	0.63	1.56	0.18	1	\$ 23.93
PCM20-375-03B	3	3/8	3/8	1.25	1.00	1.13	1.13	0.20	4.25	0.89	0.63	1.56	0.18	1	\$ 25.83
PCM20-375-04B	4	3/8	3/8	1.25	1.00	1.13	2.25	0.20	5.38	0.89	0.63	1.56	0.18	1	\$ 27.76
PCM20-375-05B	5	3/8	3/8	1.25	1.00	1.13	3.38	0.20	6.50	0.89	0.63	1.56	0.18	1	\$ 32.62
PCM20-375-06B	6	3/8	3/8	1.25	1.00	1.13	4.50	0.20	7.63	0.89	0.63	1.56	0.18	1	\$ 34.95
PCM20-375-07B	7	3/8	3/8	1.25	1.00	1.13	5.63	0.20	8.75	0.89	0.63	1.56	0.18	1	\$ 37.26
PCM20-375-08B	8	3/8	3/8	1.25	1.00	1.13	6.75	0.20	9.88	0.89	0.63	1.56	0.18	1	\$ 39.57
PCM20-375-09B	9	3/8	3/8	1.25	1.00	1.13	7.88	0.20	11.00	0.89	0.63	1.56	0.18	1	\$ 41.88
PCM20-375-10B	10	3/8	3/8	1.25	1.00	1.13	9.00	0.20	12.13	0.89	0.63	1.56	0.18	1	\$ 44.21



# BLACK ANODIZED MANIFOLD

1/4 OUTLET X 1/2 INLET



## INLINE

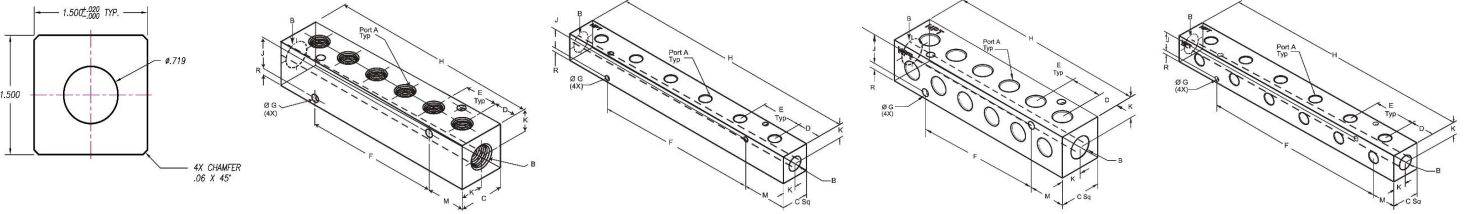
Part #	Outlets	A	B	C	D	E	F	G	H	J	K	M	R	QTY	List Price
PCM30-250-02B	2	1/4	1/2	1.50	0.88	1.00	N/A	0.20	2.75	1.12	0.75	1.38	0.19	1	\$ 25.69
PCM30-250-02BW	2	1/4	1/2	1.50	0.88	1.50	N/A	0.20	3.25	1.12	0.75	1.63	0.19	1	\$ 26.62
PCM30-250-03B	3	1/4	1/2	1.50	0.88	1.00	1.00	0.20	3.75	1.12	0.75	1.38	0.19	1	\$ 28.00
PCM30-250-03BW	3	1/4	1/2	1.50	0.88	1.50	1.50	0.20	4.75	1.12	0.75	1.63	0.19	1	\$ 29.88
PCM30-250-04B	4	1/4	1/2	1.50	0.88	1.00	2.00	0.20	4.75	1.12	0.75	1.38	0.19	1	\$ 30.31
PCM30-250-04BW	4	1/4	1/2	1.50	0.88	1.50	3.00	0.20	6.25	1.12	0.75	1.63	0.19	1	\$ 33.14
PCM30-250-05B	5	1/4	1/2	1.50	0.88	1.00	3.00	0.20	5.75	1.12	0.75	1.38	0.19	1	\$ 32.62
PCM30-250-05BW	5	1/4	1/2	1.50	0.88	1.50	4.50	0.20	7.75	1.12	0.75	1.63	0.19	1	\$ 36.38
PCM30-250-06B	6	1/4	1/2	1.50	0.88	1.00	4.00	0.20	6.75	1.12	0.75	1.38	0.19	1	\$ 34.95
PCM30-250-06BW	6	1/4	1/2	1.50	0.88	1.50	6.00	0.20	9.25	1.12	0.75	1.63	0.19	1	\$ 39.64
PCM30-250-07B	7	1/4	1/2	1.50	0.88	1.00	5.00	0.20	7.75	1.12	0.75	1.38	0.19	1	\$ 37.26
PCM30-250-07BW	7	1/4	1/2	1.50	0.88	1.50	7.50	0.20	10.75	1.12	0.75	1.63	0.19	1	\$ 42.90
PCM30-250-08B	8	1/4	1/2	1.50	0.88	1.00	6.50	0.20	8.75	1.12	0.75	1.38	0.19	1	\$ 39.57
PCM30-250-08BW	8	1/4	1/2	1.50	0.88	1.50	9.00	0.20	12.25	1.12	0.75	1.63	0.19	1	\$ 46.17
PCM30-250-09B	9	1/4	1/2	1.50	0.88	1.00	7.00	0.20	9.75	1.12	0.75	1.38	0.19	1	\$ 41.88
PCM30-250-09BW	9	1/4	1/2	1.50	0.88	1.50	10.50	0.20	13.75	1.12	0.75	1.63	0.19	1	\$ 49.43
PCM30-250-10B	10	1/4	1/2	1.50	0.88	1.00	8.00	0.20	10.75	1.12	0.75	1.38	0.19	1	\$ 44.21
PCM30-250-10BW	10	1/4	1/2	1.50	0.88	1.50	12.00	0.20	15.25	1.12	0.75	1.63	0.19	1	\$ 52.67

## RIGHT ANGLE

Part #	Outlets	A	B	C	D	E	F	G	H	J	K	M	R	QTY	List Price
PCM30-250R-02B	4	1/4	1/2	1.50	0.88	1.00	N/A	0.20	2.75	1.12	0.75	1.38	0.19	1	\$ 32.31
PCM30-250R-02BW	4	1/4	1/2	1.50	0.88	1.50	N/A	0.20	3.25	1.12	0.75	1.63	0.19	1	\$ 33.26
PCM30-250R-03B	6	1/4	1/2	1.50	0.88	1.00	1.00	0.20	3.75	1.12	0.75	1.38	0.19	1	\$ 35.07
PCM30-250R-03BW	6	1/4	1/2	1.50	0.88	1.50	1.50	0.20	4.75	1.12	0.75	1.63	0.19	1	\$ 36.95
PCM30-250R-04B	8	1/4	1/2	1.50	0.88	1.00	2.00	0.20	4.75	1.12	0.75	1.38	0.19	1	\$ 37.81
PCM30-250R-04BW	8	1/4	1/2	1.50	0.88	1.50	3.00	0.20	6.25	1.12	0.75	1.63	0.19	1	\$ 40.64
PCM30-250R-05B	10	1/4	1/2	1.50	0.88	1.00	3.00	0.20	5.75	1.12	0.75	1.38	0.19	1	\$ 40.57
PCM30-250R-05BW	10	1/4	1/2	1.50	0.88	1.50	4.50	0.20	7.75	1.12	0.75	1.63	0.19	1	\$ 44.33
PCM30-250R-06B	12	1/4	1/2	1.50	0.88	1.00	4.00	0.20	6.75	1.12	0.75	1.38	0.19	1	\$ 43.31
PCM30-250R-06BW	12	1/4	1/2	1.50	0.88	1.50	6.00	0.20	9.25	1.12	0.75	1.63	0.19	1	\$ 48.02
PCM30-250R-07B	14	1/4	1/2	1.50	0.88	1.00	5.00	0.20	7.75	1.12	0.75	1.38	0.19	1	\$ 45.93
PCM30-250R-07BW	14	1/4	1/2	1.50	0.88	1.50	7.50	0.20	10.75	1.12	0.75	1.63	0.19	1	\$ 51.60
PCM30-250R-08B	16	1/4	1/2	1.50	0.88	1.00	6.00	0.20	8.75	1.12	0.75	1.38	0.19	1	\$ 48.93
PCM30-250R-08BW	16	1/4	1/2	1.50	0.88	1.50	9.00	0.20	12.25	1.12	0.75	1.63	0.19	1	\$ 55.52
PCM30-250R-09B	18	1/4	1/2	1.50	0.88	1.00	7.00	0.20	9.75	1.12	0.75	1.38	0.19	1	\$ 51.57
PCM30-250R-09BW	18	1/4	1/2	1.50	0.88	1.50	10.50	0.20	13.75	1.12	0.75	1.63	0.19	1	\$ 59.10
PCM30-250R-10B	20	1/4	1/2	1.50	0.88	1.00	8.00	0.20	10.75	1.12	0.75	1.38	0.19	1	\$ 54.31
PCM30-250R-10BW	20	1/4	1/2	1.50	0.88	1.50	12.00	0.20	15.25	1.12	0.75	1.63	0.19	1	\$ 62.79

# BLACK ANODIZED MANIFOLD

3/8 OUTLET X 1/2 INLET



## INLINE

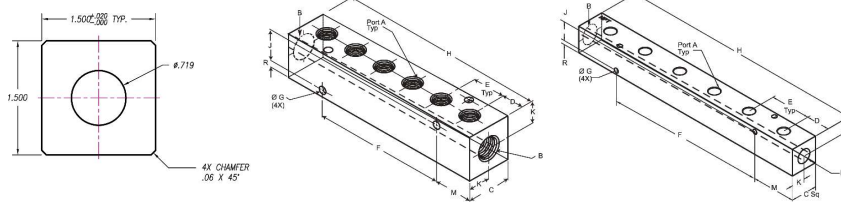
Part #	Outlets	A	B	C	D	E	F	G	H	J	K	M	R	QTY	List Price
PCM30-375-02B	2	3/8	1/2	1.50	0.88	1.00	N/A	0.20	2.75	1.12	0.75	1.38	0.19	1	\$ 13.79
PCM30-375-02BW	2	3/8	1/2	1.50	0.88	1.50	N/A	0.20	3.25	1.12	0.75	1.63	0.19	1	\$ 14.71
PCM30-375-03B	3	3/8	1/2	1.50	0.88	1.00	1.00	0.20	3.75	1.12	0.75	1.38	0.19	1	\$ 16.10
PCM30-375-03BW	3	3/8	1/2	1.50	0.88	1.50	1.50	0.20	4.75	1.12	0.75	1.63	0.19	1	\$ 17.98
PCM30-375-04B	4	3/8	1/2	1.50	0.88	1.00	2.00	0.20	4.75	1.12	0.75	1.38	0.19	1	\$ 18.40
PCM30-375-04BW	4	3/8	1/2	1.50	0.88	1.50	3.00	0.20	6.25	1.12	0.75	1.63	0.19	1	\$ 21.24
PCM30-375-05B	5	3/8	1/2	1.50	0.88	1.00	3.00	0.20	5.75	1.12	0.75	1.38	0.19	1	\$ 20.71
PCM30-375-05BW	5	3/8	1/2	1.50	0.88	1.50	4.50	0.20	7.75	1.12	0.75	1.63	0.19	1	\$ 24.48
PCM30-375-06B	6	3/8	1/2	1.50	0.88	1.00	4.00	0.20	6.75	1.12	0.75	1.38	0.19	1	\$ 23.05
PCM30-375-06BW	6	3/8	1/2	1.50	0.88	1.50	6.00	0.20	9.25	1.12	0.75	1.63	0.19	1	\$ 27.74
PCM30-375-07B	7	3/8	1/2	1.50	0.88	1.00	5.00	0.20	7.75	1.12	0.75	1.38	0.19	1	\$ 25.36
PCM30-375-07BW	7	3/8	1/2	1.50	0.88	1.50	7.50	0.20	10.75	1.12	0.75	1.63	0.19	1	\$ 42.90
PCM30-375-08B	8	3/8	1/2	1.50	0.88	1.00	6.50	0.20	8.75	1.12	0.75	1.38	0.19	1	\$ 27.67
PCM30-375-08BW	8	3/8	1/2	1.50	0.88	1.50	9.00	0.20	12.25	1.12	0.75	1.63	0.19	1	\$ 34.26
PCM30-375-09B	9	3/8	1/2	1.50	0.88	1.00	7.00	0.20	9.75	1.12	0.75	1.38	0.19	1	\$ 29.98
PCM30-375-09BW	9	3/8	1/2	1.50	0.88	1.50	10.50	0.20	13.75	1.12	0.75	1.63	0.19	1	\$ 49.43
PCM30-375-10B	10	3/8	1/2	1.50	0.88	1.00	8.00	0.20	10.75	1.12	0.75	1.38	0.19	1	\$ 32.31
PCM30-375-10BW	10	3/8	1/2	1.50	0.88	1.50	12.00	0.20	15.25	1.12	0.75	1.63	0.19	1	\$ 52.67

## RIGHT ANGLE

Part #	Outlets	A	B	C	D	E	F	G	H	J	K	M	R	QTY	List Price
PCM30-375R-02B	4	3/8	1/2	1.50	0.88	1.00	N/A	0.20	2.75	1.12	0.75	1.38	0.19	1	\$ 20.40
PCM30-375R-02BW	4	3/8	1/2	1.50	0.88	1.50	N/A	0.20	3.25	1.12	0.75	1.63	0.19	1	\$ 33.26
PCM30-375R-03B	6	3/8	1/2	1.50	0.88	1.00	1.00	0.20	3.75	1.12	0.75	1.38	0.19	1	\$ 23.17
PCM30-375R-03BW	6	3/8	1/2	1.50	0.88	1.50	1.50	0.20	4.75	1.12	0.75	1.63	0.19	1	\$ 36.95
PCM30-375R-04B	8	3/8	1/2	1.50	0.88	1.00	2.00	0.20	4.75	1.12	0.75	1.38	0.19	1	\$ 25.90
PCM30-375R-04BW	8	3/8	1/2	1.50	0.88	1.50	3.00	0.20	6.25	1.12	0.75	1.63	0.19	1	\$ 28.74
PCM30-375R-05B	10	3/8	1/2	1.50	0.88	1.00	3.00	0.20	5.75	1.12	0.75	1.38	0.19	1	\$ 28.67
PCM30-375R-05BW	10	3/8	1/2	1.50	0.88	1.50	4.50	0.20	7.75	1.12	0.75	1.63	0.19	1	\$ 32.43
PCM30-375R-06B	12	3/8	1/2	1.50	0.88	1.00	4.00	0.20	6.75	1.12	0.75	1.38	0.19	1	\$ 31.40
PCM30-375R-06BW	12	3/8	1/2	1.50	0.88	1.50	6.00	0.20	9.25	1.12	0.75	1.63	0.19	1	\$ 36.12
PCM30-375R-07B	14	3/8	1/2	1.50	0.88	1.00	5.00	0.20	7.75	1.12	0.75	1.38	0.19	1	\$ 45.93
PCM30-375R-07BW	14	3/8	1/2	1.50	0.88	1.50	7.50	0.20	10.75	1.12	0.75	1.63	0.19	1	\$ 51.60
PCM30-375R-08B	16	3/8	1/2	1.50	0.88	1.00	6.00	0.20	8.75	1.12	0.75	1.38	0.19	1	\$ 42.98
PCM30-375R-08BW	16	3/8	1/2	1.50	0.88	1.50	9.00	0.20	12.25	1.12	0.75	1.63	0.19	1	\$ 55.52
PCM30-375R-09B	18	3/8	1/2	1.50	0.88	1.00	7.00	0.20	9.75	1.12	0.75	1.38	0.19	1	\$ 51.57
PCM30-375R-09BW	18	3/8	1/2	1.50	0.88	1.50	10.50	0.20	13.75	1.12	0.75	1.63	0.19	1	\$ 59.10
PCM30-375R-10B	20	3/8	1/2	1.50	0.88	1.00	8.00	0.20	10.75	1.12	0.75	1.38	0.19	1	\$ 48.36
PCM30-375R-10BW	20	3/8	1/2	1.50	0.88	1.50	12.00	0.20	15.25	1.12	0.75	1.63	0.19	1	\$ 62.79

# NICKEL PLATED MANIFOLD

3/8 OUTLET X 1/2 INLET



## INLINE

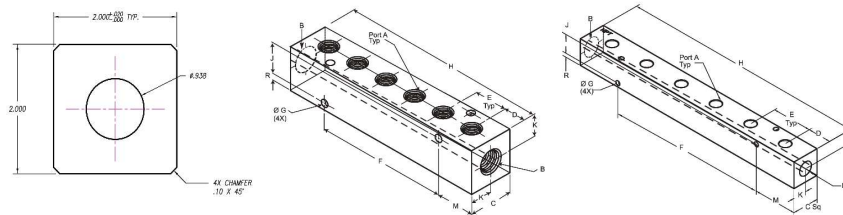
Part #	Outlets	A	B	C	D	E	F	G	H	J	K	M	R	QTY	List Price
PCM30-375-02NP	2	3/8	1/2	1.50	0.88	1.00	N/A	0.20	2.75	1.12	0.75	1.38	0.19	1	\$ 28.83
PCM30-375-02NPW	2	3/8	1/2	1.50	0.88	1.50	N/A	0.20	3.25	1.12	0.75	1.63	0.19	1	\$ 30.17
PCM30-375-03NP	3	3/8	1/2	1.50	0.88	1.00	1.00	0.20	3.75	1.12	0.75	1.38	0.19	1	\$ 31.93
PCM30-375-03NPW	3	3/8	1/2	1.50	0.88	1.50	1.50	0.20	4.75	1.12	0.75	1.63	0.19	1	\$ 34.60
PCM30-375-04NP	4	3/8	1/2	1.50	0.88	1.00	2.00	0.20	4.75	1.12	0.75	1.38	0.19	1	\$ 35.02
PCM30-375-04NPW	4	3/8	1/2	1.50	0.88	1.50	3.00	0.20	6.25	1.12	0.75	1.63	0.19	1	\$ 39.00
PCM30-375-05NP	5	3/8	1/2	1.50	0.88	1.00	3.00	0.20	5.75	1.12	0.75	1.38	0.19	1	\$ 38.12
PCM30-375-05NPW	5	3/8	1/2	1.50	0.88	1.50	4.50	0.20	7.75	1.12	0.75	1.63	0.19	1	\$ 43.43
PCM30-375-06NP	6	3/8	1/2	1.50	0.88	1.00	4.00	0.20	6.75	1.12	0.75	1.38	0.19	1	\$ 41.19
PCM30-375-06NPW	6	3/8	1/2	1.50	0.88	1.50	6.00	0.20	9.25	1.12	0.75	1.63	0.19	1	\$ 47.83
PCM30-375-08NP	8	3/8	1/2	1.50	0.88	1.00	6.00	0.20	8.75	1.12	0.75	1.38	0.19	1	\$ 47.38
PCM30-375-08NPW	8	3/8	1/2	1.50	0.88	1.50	9.00	0.20	12.25	1.12	0.75	1.63	0.19	1	\$ 56.69
PCM30-375-09NP	9	3/8	1/2	1.50	0.88	1.00	7.00	0.20	9.75	1.12	0.75	1.38	0.19	1	\$ 50.48
PCM30-375-10NP	10	3/8	1/2	1.50	0.88	1.00	8.00	0.20	10.75	1.12	0.75	1.38	0.19	1	\$ 53.57

# POLYCONN®

Servicing Your Pneumatic Needs For Over 40 Years

## BLACK ANODIZED MANIFOLD

1/2 OUTLET X 3/4 INLET

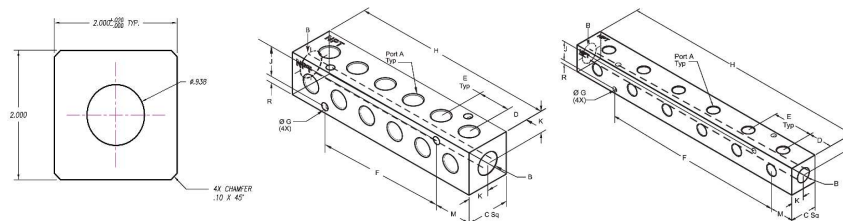


### INLINE

Part #	Outlets	A	B	C	D	E	F	G	H	J	M	R	QTY	List Price
PC000-03-1/2	3	1/2"	3/4"	2.0	1.25	1.5	1.5	0.28	5.5	1.5	2.0	0.25	1	\$ 44.62
PC000-03-1/2X	3	1/2"	3/4"	2.0	1.25	3.0	2.55	0.28	8.5	1.5	2.0	0.25	N/A	QUOTE
PC000-04-1/2	4	1/2"	3/4"	2.0	1.25	1.5	3.0	0.28	7.0	1.5	2.0	0.25	1	\$ 60.12
PC000-04-1/2X	4	1/2"	3/4"	2.0	1.25	3.0	3.75	0.28	11.5	1.5	2.0	0.25	N/A	QUOTE
PC000-05-1/2	5	1/2"	3/4"	2.0	1.25	1.5	4.5	0.28	8.5	1.5	2.0	0.25	1	\$ 76.38
PC000-05-1/2X	5	1/2"	3/4"	2.0	1.25	3.0	5.25	0.28	14.5	1.5	2.0	0.25	N/A	QUOTE
PC000-06-1/2	6	1/2"	3/4"	2.0	1.25	1.5	6.0	0.28	10.0	1.5	2.0	0.25	1	\$ 86.45
PC000-06-1/2X	6	1/2"	3/4"	2.0	1.25	3.0	6.75	0.28	17.5	1.5	2.0	0.25	N/A	QUOTE

## BLACK ANODIZED MANIFOLD

1/2 OUTLET X 3/4 INLET

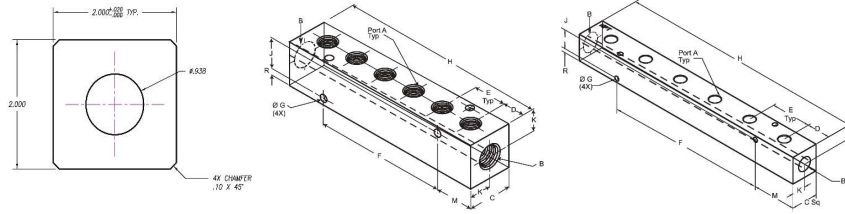


### RIGHT ANGLE

Part #	Outlets	A	B	C	D	E	F	G	H	J	M	R	QTY	List Price
PC090-03-1/2	6	1/2"	3/4"	2.0	1.25	1.5	1.5	0.28	5.5	1.5	2.0	0.25	QUOTE	
PC090-03-1/2X	6	1/2"	3/4"	2.0	1.25	3.0	2.55	0.28	8.5	1.5	2.5	0.25	QUOTE	
PC090-04-1/2	8	1/2"	3/4"	2.0	1.25	1.5	3.0	0.28	7.0	1.5	2.0	0.25	QUOTE	
PC090-04-1/2X	8	1/2"	3/4"	2.0	1.25	3.0	3.75	0.28	11.5	1.5	2.0	0.25	QUOTE	
PC090-05-1/2	10	1/2"	3/4"	2.0	1.25	1.5	4.5	0.28	8.5	1.5	2.0	0.25	QUOTE	
PC090-05-1/2X	10	1/2"	3/4"	2.0	1.25	3.0	5.25	0.28	14.5	1.5	2.0	0.25	QUOTE	
PC090-06-1/2	12	1/2"	3/4"	2.0	1.25	1.5	6.0	0.28	10.0	1.5	2.0	0.25	QUOTE	
PC090-06-1/2X	12	1/2"	3/4"	2.0	1.25	3.0	6.75	0.28	17.5	1.5	2.0	0.25	QUOTE	

## NICKEL PLATED MANIFOLD

1/2 OUTLET X 3/4 INLET

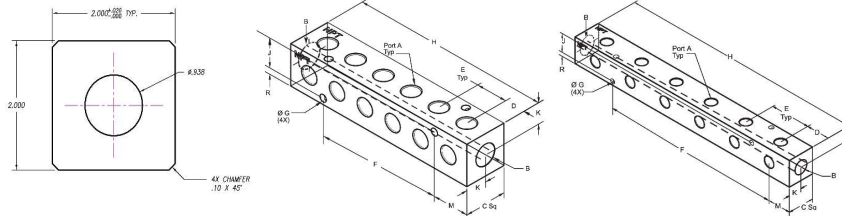


### INLINE

Part #	Outlets	A	B	C	D	E	F	G	H	J	M	R	QTY	List Price
PC000-03-1/2NP	3	1/2"	3/4"	2.0	1.25	1.5	1.5	0.28	5.5	1.5	2.0	0.25	1	\$ 64.26
PC000-03-1/2XNP	3	1/2"	3/4"	2.0	1.25	3.0	2.55	0.28	8.5	1.5	2.0	0.25	N/A	QUOTE
PC000-04-1/2NP	4	1/2"	3/4"	2.0	1.25	1.5	3.0	0.28	7.0	1.5	2.0	0.25	1	\$ 81.81
PC000-04-1/2XNP	4	1/2"	3/4"	2.0	1.25	3.0	3.75	0.28	11.5	1.5	2.0	0.25	N/A	QUOTE
PC000-05-1/2NP	5	1/2"	3/4"	2.0	1.25	1.5	4.5	0.28	8.5	1.5	2.0	0.25	1	\$ 100.14
PC000-05-1/2XNP	5	1/2"	3/4"	2.0	1.25	3.0	5.25	0.28	14.5	1.5	2.0	0.25	N/A	QUOTE
PC000-06-1/2NP	6	1/2"	3/4"	2.0	1.25	1.5	6.0	0.28	10.0	1.5	2.0	0.25	1	\$ 112.29
PC000-06-1/2XNP	6	1/2"	3/4"	2.0	1.25	3.0	6.75	0.28	17.5	1.5	2.0	0.25	N/A	QUOTE

## NICKEL PLATED MANIFOLD

1/2 OUTLET X 3/4 INLET

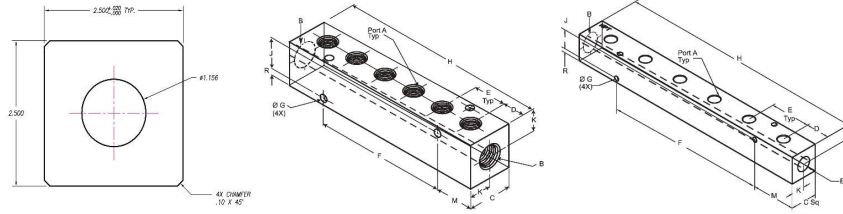


### RIGHT ANGLE

Part #	Outlets	A	B	C	D	E	F	G	H	J	M	R	QTY	List Price
PC090-03-1/2NP	6	1/2"	3/4"	2.0	1.25	1.5	1.5	0.28	5.5	1.5	2.0	0.25	1	QUOTE
PC090-03-1/2XNP	6	1/2"	3/4"	2.0	1.25	3.0	2.55	0.28	8.5	1.5	2.5	0.25	1	QUOTE
PC090-04-1/2NP	8	1/2"	3/4"	2.0	1.25	1.5	3.0	0.28	7.0	1.5	2.0	0.25	1	QUOTE
PC090-04-1/2XNP	8	1/2"	3/4"	2.0	1.25	3.0	3.75	0.28	11.5	1.5	2.0	0.25	1	QUOTE
PC090-05-1/2NP	10	1/2"	3/4"	2.0	1.25	1.5	4.5	0.28	8.5	1.5	2.0	0.25	1	QUOTE
PC090-05-1/2XNP	10	1/2"	3/4"	2.0	1.25	3.0	5.25	0.28	14.5	1.5	2.0	0.25	1	QUOTE
PC090-06-1/2NP	12	1/2"	3/4"	2.0	1.25	1.5	6.0	0.28	10.0	1.5	2.0	0.25	1	QUOTE
PC090-06-1/2XNP	12	1/2"	3/4"	2.0	1.25	3.0	6.75	0.28	17.5	1.5	2.0	0.25	1	QUOTE

## BLACK ANODIZED MANIFOLD

3/4" OUTLET X 1" INLET

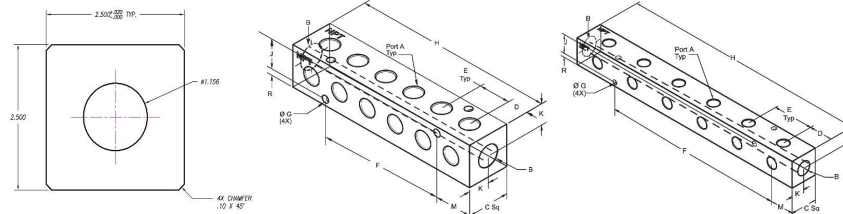


### INLINE

Part #	Outlets	A	B	C	D	E	F	G	H	J	M	R	QTY	List Price
PC000-03-3/4	3	3/4"	1"	2.5	1.5	2.0	2.0	0.28	7.0	2.0	2.5	0.25	1	\$ 80.98
PC000-03-3/4X	3	3/4"	1"	2.5	1.5	3.5	5.0	0.28	10.0	2.0	2.5	0.25	N/A	QUOTE
PC000-04-3/4	4	3/4"	1"	2.5	1.5	2.0	4.0	0.28	9.0	2.0	2.5	0.25	1	\$ 94.45
PC000-04-3/4X	4	3/4"	1"	2.5	1.5	3.5	8.5	0.28	13.5	2.0	2.5	0.25	N/A	QUOTE
PC000-05-3/4	5	3/4"	1"	2.5	1.5	2.0	6.0	0.28	11.0	2.0	2.5	0.25	1	\$ 119.24
PC000-05-3/4X	5	3/4"	1"	2.5	1.5	3.5	12.0	0.28	17.0	2.0	2.5	0.25	N/A	QUOTE
PC000-06-3/4	6	3/4"	1"	2.5	1.5	2.0	8.0	0.28	13.0	2.0	2.5	0.25	1	\$ 136.60
PC000-06-3/4X	6	3/4"	1"	2.5	1.5	3.5	15.5	0.28	20.5	2.0	2.5	0.25	N/A	QUOTE

## BLACK ANODIZED MANIFOLD

3/4" OUTLET X 1" INLET

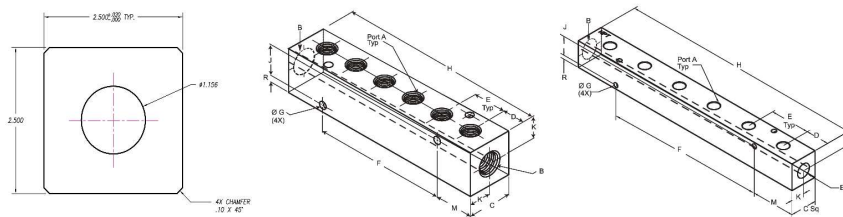


### RIGHT ANGLE

Part #	Outlets	A	B	C	D	E	F	G	H	J	M	R	QTY	List Price
PC090-03-3/4	6	3/4"	1"	2.5	1.5	2.0	2.0	0.28	7.0	2.0	2.5	0.25		QUOTE
PC090-03-3/4X	6	3/4"	1"	2.5	1.5	3.5	5.0	0.28	10.0	2.0	2.5	0.25		QUOTE
PC090-04-3/4	8	3/4"	1"	2.5	1.5	2.0	4.0	0.28	9.0	2.0	2.5	0.25		QUOTE
PC090-04-3/4X	8	3/4"	1"	2.5	1.5	3.5	8.5	0.28	13.5	2.0	2.5	0.25		QUOTE
PC090-05-3/4	10	3/4"	1"	2.5	1.5	2.0	6.0	0.28	11.0	2.0	2.5	0.25		QUOTE
PC090-05-3/4X	10	3/4"	1"	2.5	1.5	3.5	12.0	0.28	17.0	2.0	2.5	0.25		QUOTE
PC090-06-3/4	12	3/4"	1"	2.5	1.5	2.0	8.0	0.28	13.0	2.0	2.5	0.25		QUOTE
PC090-06-3/4X	12	3/4"	1"	2.5	1.5	3.5	15.5	0.28	20.5	2.0	2.5	0.25		QUOTE

## NICKEL PLATED MANIFOLD

3/4" OUTLET X 1" INLET

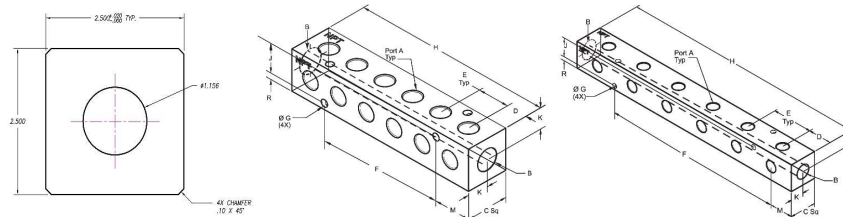


### INLINE

Part #	Outlets	A	B	C	D	E	F	G	H	J	M	R	QTY	List Price
PC000-03-3/4-NP	3	3/4"	1"	2.5	1.5	2.0	2.0	0.28	7.0	2.0	2.5	0.25	1	\$ 108.33
PC000-03-3/4XNP	3	3/4"	1"	2.5	1.5	3.5	5.0	0.28	10.0	2.0	2.5	0.25	N/A	QUOTE
PC000-04-3/4-NP	4	3/4"	1"	2.5	1.5	2.0	4.0	0.28	9.0	2.0	2.5	0.25	1	\$ 126.14
PC000-04-3/4XNP	4	3/4"	1"	2.5	1.5	3.5	8.5	0.28	13.5	2.0	2.5	0.25	N/A	QUOTE
PC000-05-3/4-NP	5	3/4"	1"	2.5	1.5	2.0	6.0	0.28	11.0	2.0	2.5	0.25	1	\$ 155.29
PC000-05-3/4XNP	5	3/4"	1"	2.5	1.5	3.5	12.0	0.28	17.0	2.0	2.5	0.25	N/A	QUOTE
PC000-06-3/4-NP	6	3/4"	1"	2.5	1.5	2.0	8.0	0.28	13.0	2.0	2.5	0.25	1	\$ 176.93
PC000-06-3/4XNP	6	3/4"	1"	2.5	1.5	3.5	15.5	0.28	20.5	2.0	2.5	0.25	N/A	QUOTE

## NICKEL PLATED MANIFOLD

3/4" OUTLET X 1" INLET



### RIGHT ANGLE

Part #	Outlets	A	B	C	D	E	F	G	H	J	M	R	QTY	List Price
PC090-03-3/4-NP	6	3/4"	1"	2.0	1.25	1.5	1.5	0.28	5.5	1.5	2.0	0.25	QUOTE	
PC090-03-3/4XNP	6	3/4"	1"	2.0	1.25	3.0	2.55	0.28	8.5	1.5	2.5	0.25	QUOTE	
PC090-04-3/4-NP	8	3/4"	1"	2.0	1.25	1.5	3.0	0.28	7.0	1.5	2.0	0.25	QUOTE	
PC090-04-3/4XNP	8	3/4"	1"	2.0	1.25	3.0	3.75	0.28	11.5	1.5	2.0	0.25	QUOTE	
PC090-05-3/4-NP	10	3/4"	1"	2.0	1.25	1.5	4.5	0.28	8.5	1.5	2.0	0.25	QUOTE	
PC090-05-3/4XNP	10	3/4"	1"	2.0	1.25	3.0	5.25	0.28	14.5	1.5	2.0	0.25	QUOTE	
PC090-06-3/4-NP	12	3/4"	1"	2.0	1.25	1.5	6.0	0.28	10.0	1.5	2.0	0.25	QUOTE	
PC090-06-3/4XNP	12	3/4"	1"	2.0	1.25	3.0	6.75	0.28	17.5	1.5	2.0	0.25	QUOTE	

Now that you have your manifolds, don't forget your fittings and tubing! Polyconn® offers a wide variety of Push to Connect Fittings in many different materials!  
Visit [www.polyconn.com](http://www.polyconn.com) for our full line of fittings!



Tubing:  
Polyconn carries  
Polyurethane, Nylon,  
Polyethylene and many  
more materials to choose  
from!

Push to Connect Fittings:  
Composite  
NSF Acetal Plastic  
Nickel Plated Brass  
Stainless Steel  
D.O.T. Brass  
D.O.T. Composite

**Polyconn® the one-stop shop for your  
pneumatic needs.**